



**AKAI**

**DVD PLAYER**

Model:  
DV-PX7830

**SERVICE MANUAL**

## CONTENTS

	Page
Important safety instructions-----	2-3
Specifications-----	4-5
Trouble shooting guide-----	6
Block diagram-----	7
Wiring diagram-----	8
Schematic diagram-----	9-14
Printed Circuit Boards-----	15-24
Electrical parts list-----	25-33
Exploded View-----	34

# IMPORTANT SAFETY INSTRUCTIONS



The lightning flash with arrowhead symbol within an equilateral triangle is intended to alert the user to the presence of uninsulated dangerous voltage within the product's enclosure that may be of sufficient magnitude to constitute a risk of electric shock to persons.



The exclamation point within an equilateral triangle is intended to alert the user to the presence of important operating and maintenance (servicing) instructions in the literature accompanying the appliance.

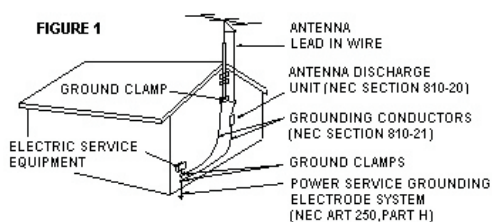
- 1. READ INSTRUCTIONS** - All the safety and operating instructions should be read before the product is operated.
- 2. RETAIN INSTRUCTIONS** - The safety and operating instructions should be retained for future reference.
- 3. HEED WARNINGS** - All warnings on the product and in the operating instructions should be adhered to.
- 4. FOLLOW INSTRUCTIONS** - All operating and use instructions should be followed.
- 5. CLEANING** - Unplug this product from the wall outlet before cleaning. Do not use liquid cleaners or aerosol cleaners. Use a damp cloth for cleaning.
- 6. ATTACHMENTS** - Do not use attachments not recommended by the product manufacturer as they may cause hazards.
- 7. WATER AND MOISTURE** - Do not use this product near water - for example, near a bath tub, wash bowl, kitchen sink, or laundry tub; in a wet basement; or near a swimming pool; and the like.
- 8. ACCESSORIES** - Do not place this product on an unstable cart, stand, tripod, bracket, or table. The product may fall, causing serious injury to a child or adult, and serious damage to the product. Use only with a cart, stand, tripod, bracket, or table recommended by the manufacturer, or sold with the product. Any mounting of the product should follow the manufacturer's instructions, and should use a mounting accessory recommended by the manufacturer.

A Product and Cart Combination Should Be Moved with Care - Quick stops, excessive force and uneven surfaces may cause the product and cart combination to overturn.



**9. VENTILATION** - Slots and openings in the cabinet are provided for ventilation and to ensure reliable operation of the product and to protect it from overheating, and these openings must not be blocked or covered. The openings should never be blocked by placing the product on a bed, sofa, rug or other similar surface. This product should not be placed in a built-in installation, such as a bookcase or rack, unless proper ventilation is provided or the manufacturer's instructions have been adhered to.

- 10. POWER SOURCES** - This product should be operated only from the type of power source indicated on the marking label. If you are not sure of the type of power supply to your home, consult your product dealer or local power company. For products intended to operate from battery power, or other sources, refer to the operating instructions.
- 12. POWER-CORD PROTECTION** - Power-supply cords should be routed so that they are not likely to be walked on or pinched by items placed upon or against them, paying particular attention to cords at plugs, convenience receptacles, and the point where exit from the product.
- 13. NONUSE PERIODS** - The power cord of the product should be unplugged from the outlet when left unused for long periods of time.
- 14. OUTDOOR ANTENNA GROUNDING** - If an outside antenna or cable system is connected to the product, be sure the antenna or cable system is grounded so as to provide some protection against voltage surges and built-up static charges. Article 810 of the National Electrical Code, ANSI/NFPA 70, provides information with regard to proper grounding of the mast and supporting structure, grounding of the lead-in wire to an antenna discharge unit, size of grounding conductors, location of antenna-discharge unit, connection to grounding electrodes, and requirements for the grounding electrode. See Figure 1



**15. LIGHTNING** - For added protection for this product during a lightning storm, or when it is left unattended and unused for long periods of time, unplug it from the wall outlet and disconnect the antenna or cable system. This will prevent damage to the product due to lightning and power-line surges.

**16. POWER LINES** - An outside antenna system should not be located in the vicinity of overhead power lines or other electric light or power circuits, or where it can fall into such power lines or other electric light or power circuits, or where it can fall into such power lines or circuits. When installing an outside antenna system, extreme care should be taken to keep from touching such power lines or circuits as contact with them might be fatal.

**17. OVERLOADING** - Do not overload wall outlets, extension cords, or integral convenience receptacles as this can result in a risk of fire or electric shock.

**18. OBJECT AND LIQUID ENTRY** - Never push objects of any kind into this product through openings as they may touch dangerous voltage points or short-out parts that could result in a fire or electric shock. Never spill liquid of any kind on the product.

**19. SERVICING** - Do not attempt to service this product yourself as opening or removing covers may expose you to dangerous voltage or other hazards. Refer all servicing to qualified service personnel.

**20. DAMAGES REQUIRING SERVICE** - Unplug this product from the wall outlet and refer servicing to qualified service personnel under the following conditions.

a) When the power-supply cord or plug is damaged.

b) If liquid has been spilled, or objects have fallen into the product.

c) If the product has been exposed to rain or water.

d) If the product does not operate normally by following the operating instructions. Adjust only those controls that are covered by the operating instructions as an improper adjustment of other controls may result in damage and will often require extensive work by a qualified technician to restore the product to its normal operation.

e) When the product exhibits a distinct change in performance - this indicates a need for service.

**21. REPLACEMENT PARTS** - When replacement parts are required, be sure the service technician has used replacement parts specified by the manufacturer or have the same characteristics as the original part. Unauthorized substitutions may result in fire, electric shock or other hazards.

**22. SAFETY CHECK** - Upon completion of any service or repair to this product, ask the service technician to perform safety checks to determine that the product is in proper operating condition.

**23. HEAT** - The product should be situated away from heat sources such as radiators, heat registers, stoves or other products (including amplifiers) that produce heat.



# SPECIFICATIONS

MODEL:FXM-DP310

Supply Voltage:AC100V~240V/50HZ-60HZ

DATE:20040224

No.	Item	Measurement conditions	Unit	Normal	limit	
1	scratch/ black dots		mm	3.0	2.4	
				1.0	0.8	
3	fingerprints		um	75	65	
				all pass	all pass	
5	vertical deviation			all pass	all pass	
				TOC	10	15
6	Access time		second	3	5	
				Open	3	5
				Close	3	5
7	intervals between chapters		second	1	3	
				video	1.0	±0.2
8	output level		V	1.0	±0.2	
				Y(S-video)	1.0	±0.2
				chrominance (S-video)	/	/
				digital(coaxial)	0.5	0.2
				audio	1.5	±0.5
9	distortion(THD)		%	0.1	1	
				channel balance	0	±2
10	channel balance		dB	65	50	
				Luminance	65	50
				chrominance(Pr)	65	50
				chrominance(Am)	65	50
11	S/N ratio		dB	65	50	
				audio	65	50
12	channel separation 1KHZ		dB	60	50	
				L/R	0	±3
13	frequency response		dB	0	0	
				1000HZ	0	±3
				997HZ	0	±3
				10007HZ	0	±3
14	Y channel band width		dB	0	±3	
				19997HZ	0	±3
15	C channel band width		dB	-3.0	-8.0	
				5.5MHZ	/	/
16	luminance Non line		%	15	20	
				1.5MHZ	/	/
17	luminance Waveform		%	4.5	7	

# SPECIFICATIONS

MODEL:FXM-DP310

Supply Voltage:AC100V~240V/50HZ-60HZ

DATE:20040224

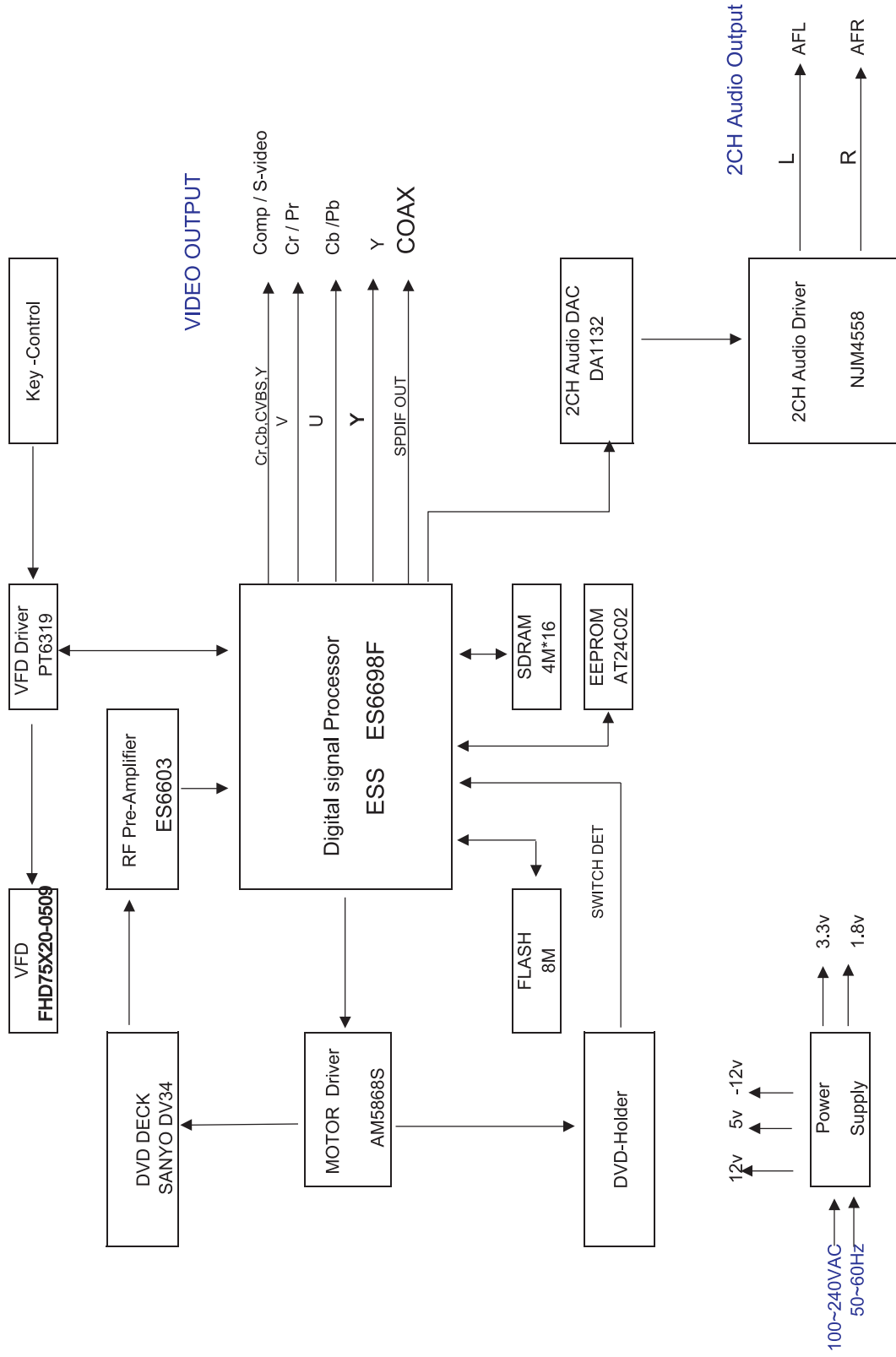
No.	Item	Measurement conditions	Unit	Normal	limit
18	Y/C D	TDV-540	ns	-80	-120
19	chroma gain	TDV-540	%	50	40
20	differential gain	TDV-540	%	4	6
21	differential phase	TDV-540		0.5	2
22	horizontal resolution (S-video)	TDV-540	line	525	500
23	VCD play			ok	ok
24	MP3 play			ok	ok
25	scratch/	TCD-25B	mm	1.0	0.8
26	black dots	TCD-25B	mm	1.0	0.8
27	fingerprints	TCD-25B	um	75	65
28	eccentric	TCD-712R		all pass	all pass
29	vertical deviation	TCD-713RA		all pass	all pass
30	total access time of TOC	TCD-784	second	10	15
31	intervals between songs	TCD-784	second	1	3
32	distortion(THD)	TCD-784 T-2	%	0.1	1
33	output level	TCD-784 T-2	V	1.5	±0.5
34	channel balance	TCD-784 T-2	dB	0	±2
35	S/N ratio	TCD-784 T-7	dB	65	50
		TCD-784 T-7	dB	65	50
36	channel separation	TCD-784 T-8	dB	60	50
		TCD-784 T-9	dB	60	50
		TCD-784 T-10	dB	60	50
		TCD-784 T-11	dB	60	50
37	frequency response	TCD-784 T-4	dB	0	±3
		TCD-784 T-2	dB	0	0
		TCD-784 T-5	dB	0	±3
		TCD-784 T-6	dB	0	±3
38	noise	TCD-784 T-7	mV	3	8

# TROUBLESHOOTING

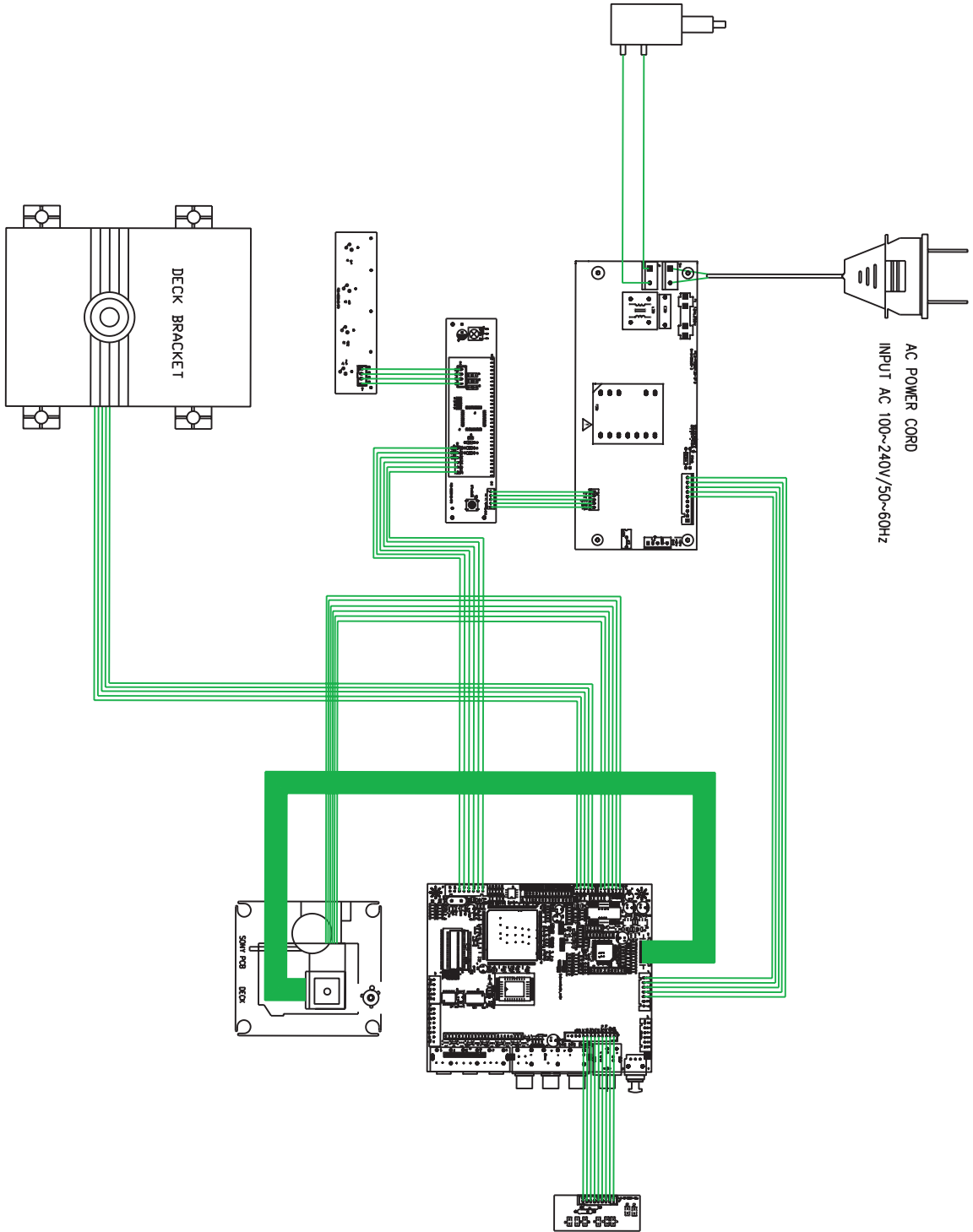
IF YOU EXPERIENCE ANY OF THE FOLLOWING DIFFICULTIES WHILE USING THE SYSTEM, USE THIS TROUBLESHOOTING GUIDE TO HELP YOU REMEDY THE PROBLEM. SHOULD ANY PROBLEM PERSIST, CONSULT YOUR NEAREST SERVICE CENTER.

SYMPTOM	CAUSE AND CORRECTION
No Power	. Connect the power plug securely into the wall outlet.
No Picture	. Check that the system is connected securely. . The video connecting cord is damaged. Replace it with a new one. . Make sure you connect the system to video input connector on the TV. . Make sure you turn on the TV. . Make sure you select the video input on the TV so that you can view the pictures from this system.
Playback picture is poor	.Select correct disc format ( PAL/ NTSC) for the TV being used. .Ensure DVD player is not connected through VCR. .The disc may be dirty and require cleaning.
rect picture size	.Change the TV aspect ration in the System Setup menu. .Change the screen format from the DVD menu.
No Sound from the speakers	. Make sure the audio cables are securely connected into the correct jacks. . Make sure the TV or receiver connected with the audio cable is turned on. . Make sure and the correct audio output format is selected. . Make sure that the receiver settings are correct. . Check the volume level on the connected equipment.
Disc does not play	.No disc is inserted. .The disc is placed upside down. .The disc region code or disc format may not be compatible. .Check the parental setup. .The disc may be dirty and require cleaning.
Severe hum or noise is heard	. Check that the connecting cords are away from a transformer or motor, and at least 3 meters away from a TV set or fluorescent light. .Move your TV away from the audio components. .The plugs and jacks are dirty. Wipe them with a cloth slightly moistened with alcohol. .The disc may be dirty and require cleaning.
Subtitles cannot be turned off	.Depending on the DVD, you may not be able to turn the subtitles off.
Soundtrack and/ or subtitle language cannot be changed	.The language is not recorded on the disc. .This function may be available only through the disc menu
Angle cannot be changed	. Multi-angles are not recorded on the DVD. .Change the angles when the angle mark appears on the TV screen. .Changing the angles is prohibited on the DVD.
The remote control does not work properly	.Point the remote control at the IR sensor of the DVD video player. .The remote control is too far from the DVD video player. .Make sure there are no obstructions between the remote control and the IR sensor on the DVD video player. .Replace the batteries and make sure they are inserted properly.
The system does not operate properly	.Static electricity, etc., may affect the systems operation. Turn the power off and on again to reset. .One of the safety mechanisms may be operating. In this event, unplug the player from the power outlet briefly and then plug it in again. . If the problem persists, refer to a qualified service professional.

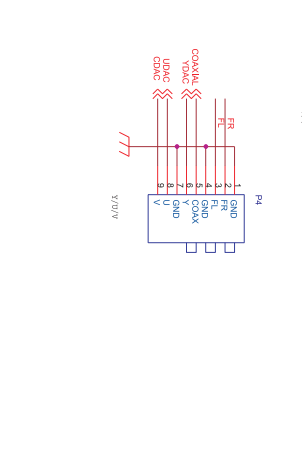
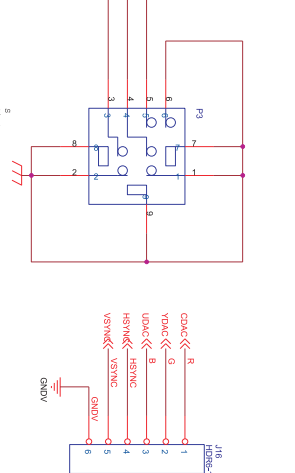
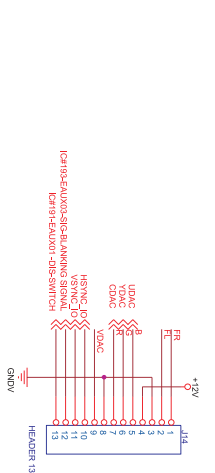
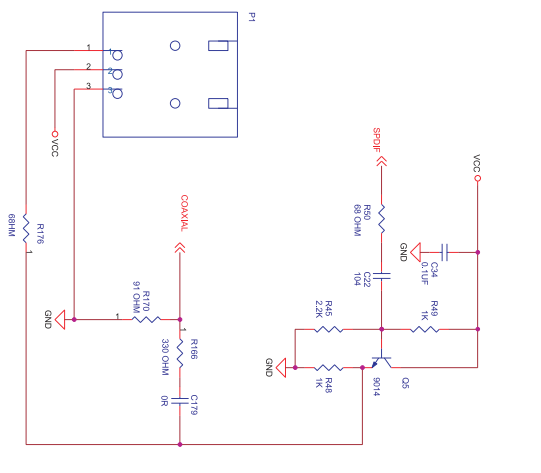
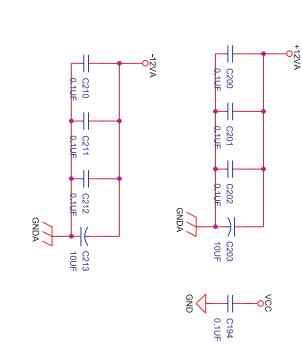
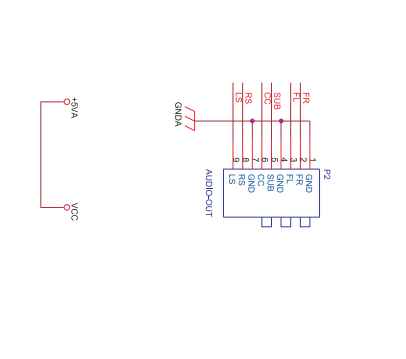
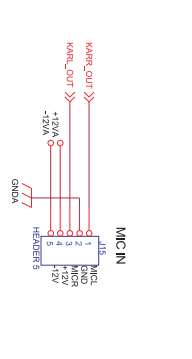
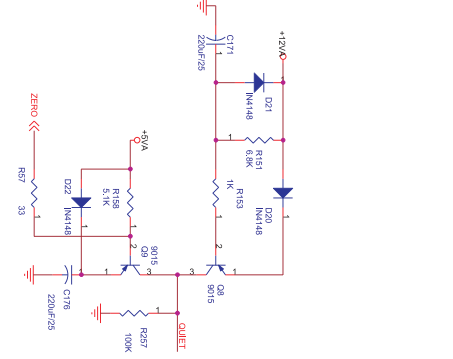
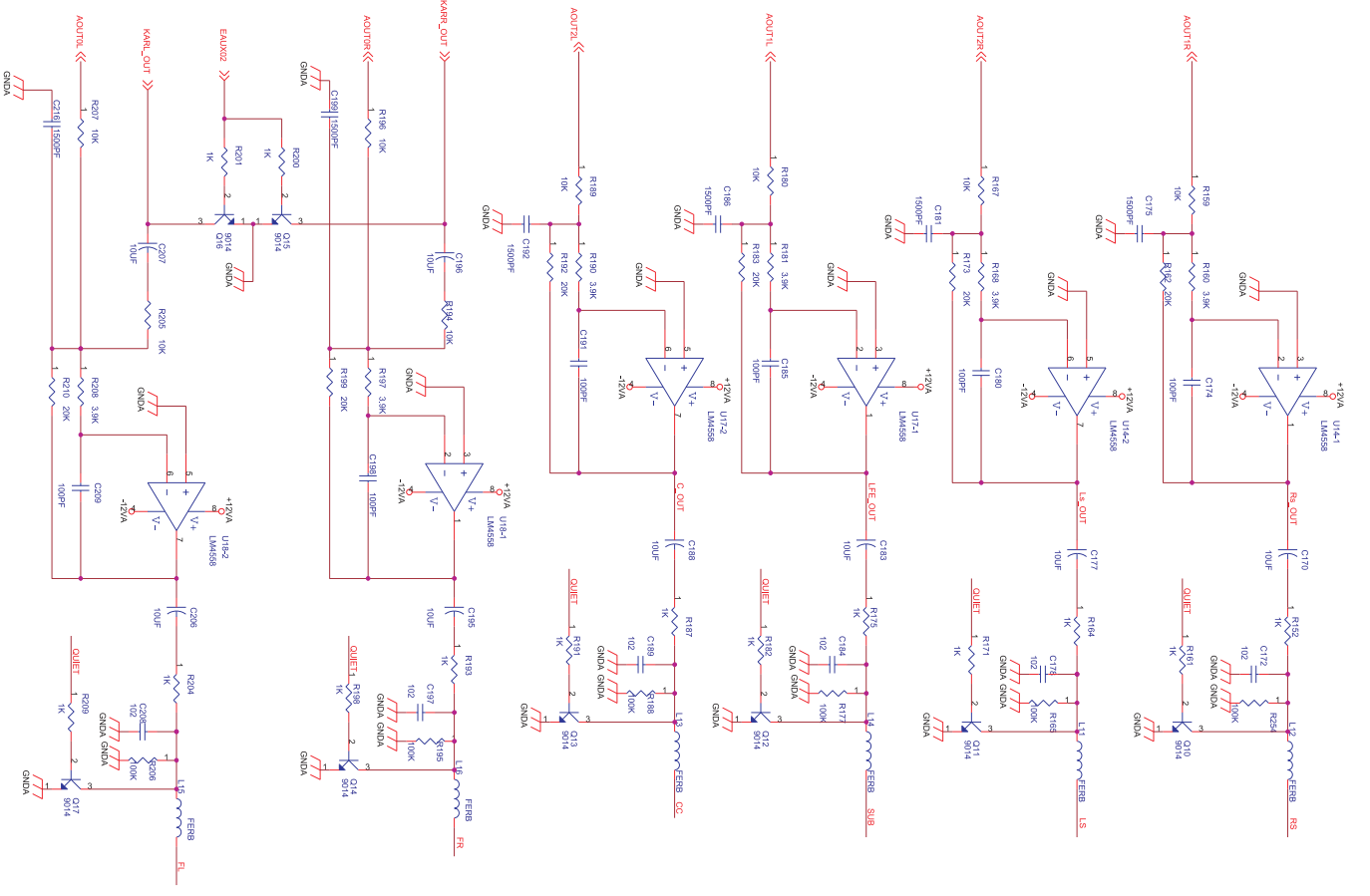
# DV-Z6-PX7830 Block diagram



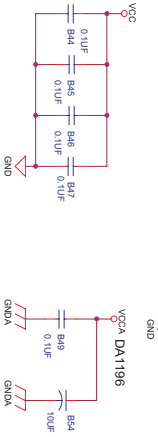
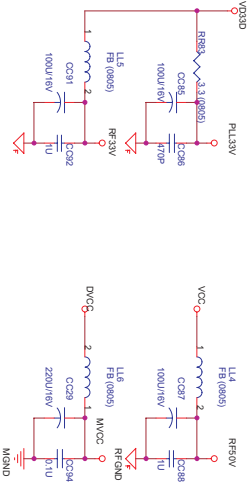
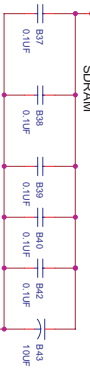
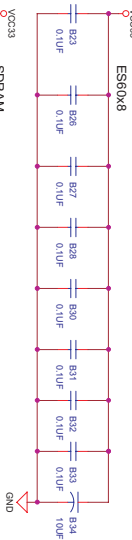
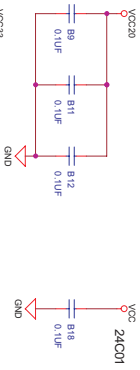
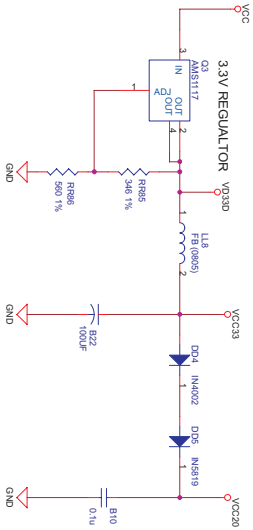
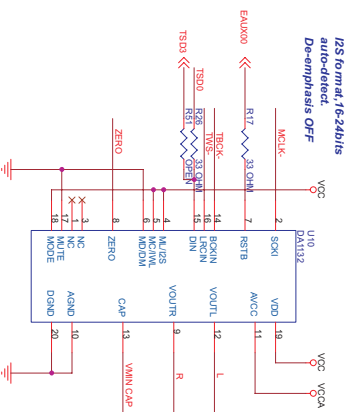
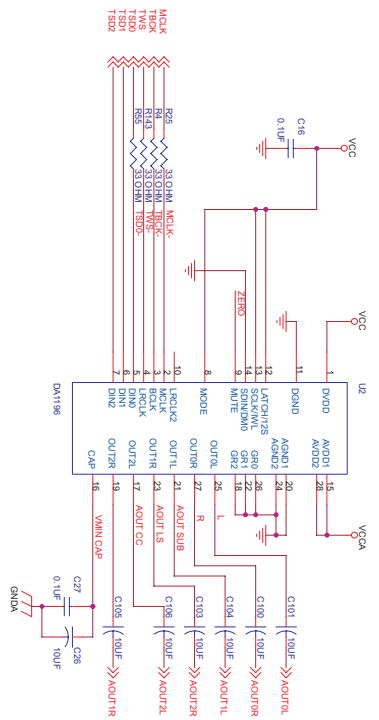
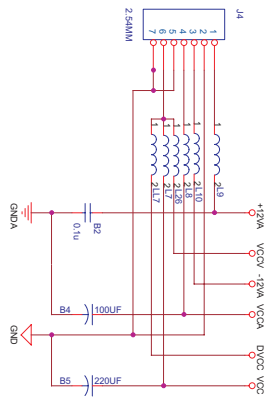
# WIRING DIAGRAM



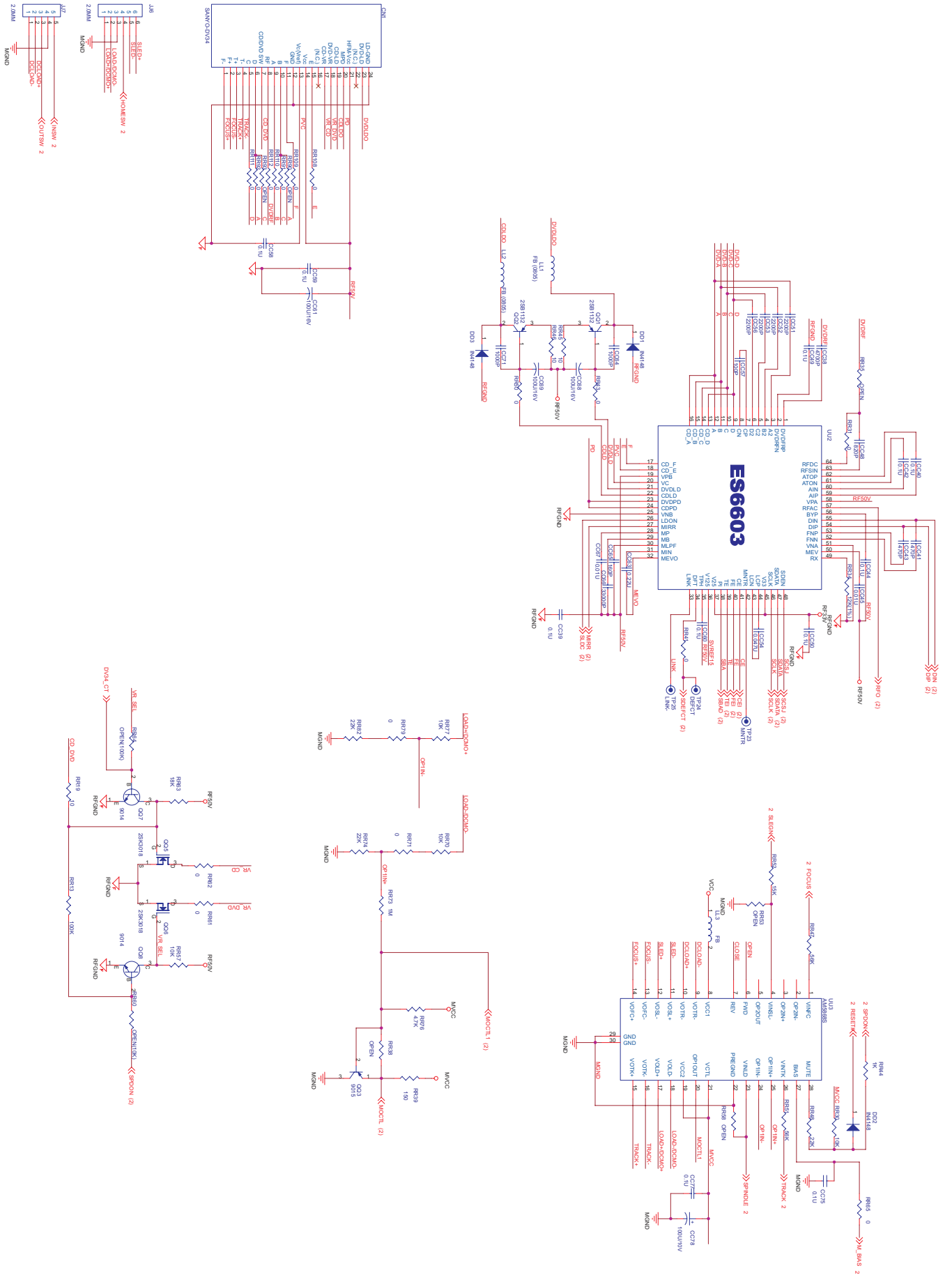
# SCHEMATIC DIAGRAMS AUDIO FILTER AND OUTPUT



# SCHEMATIC DIAGRAMS AUDIO AND POWER



# SCHEMATIC DIAGRAMS ES6603 AND MOTOR DRIVERS

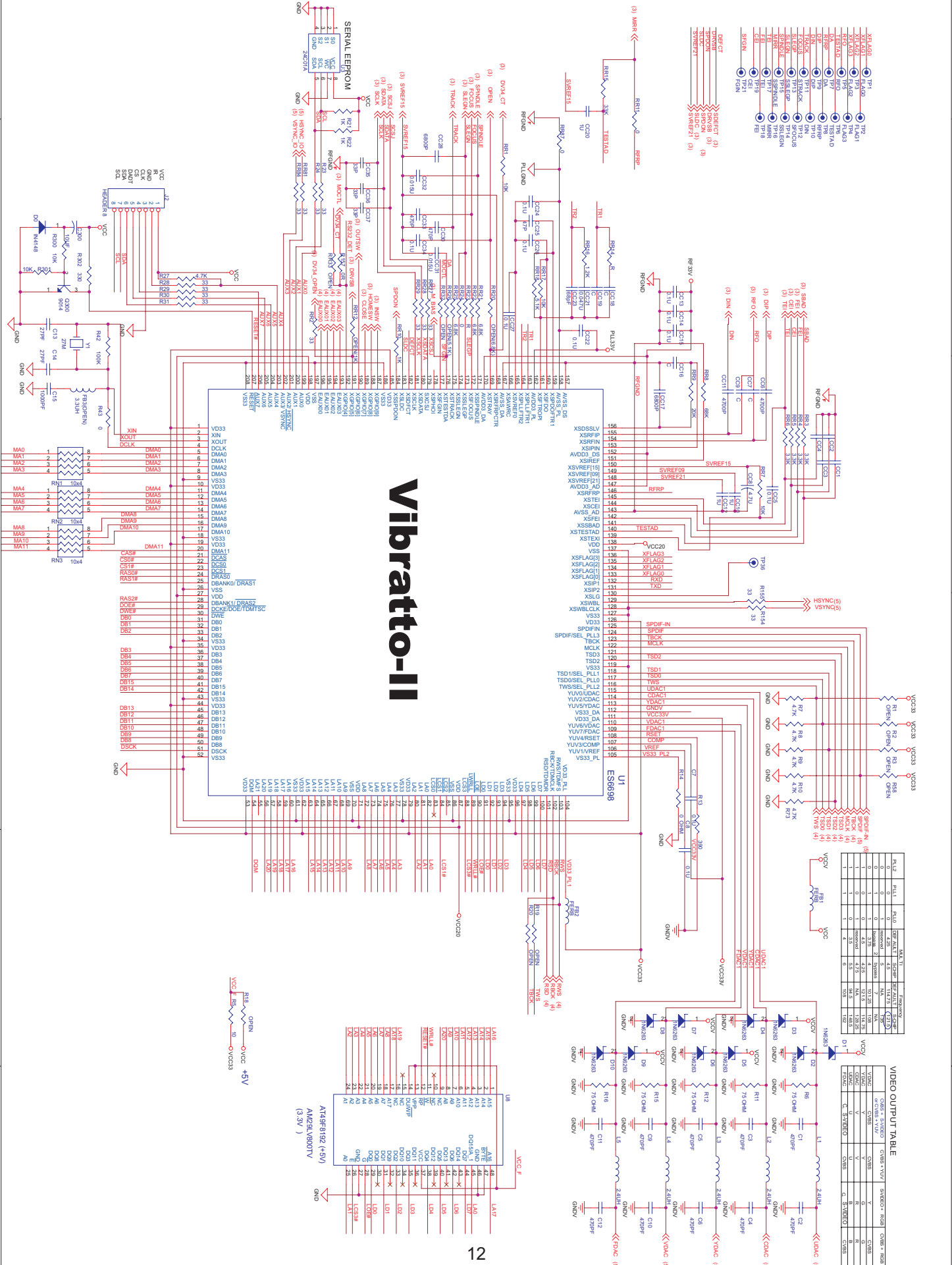




# SCHEMATIC DIAGRAMS

## VIBRATTO-II ES66X8

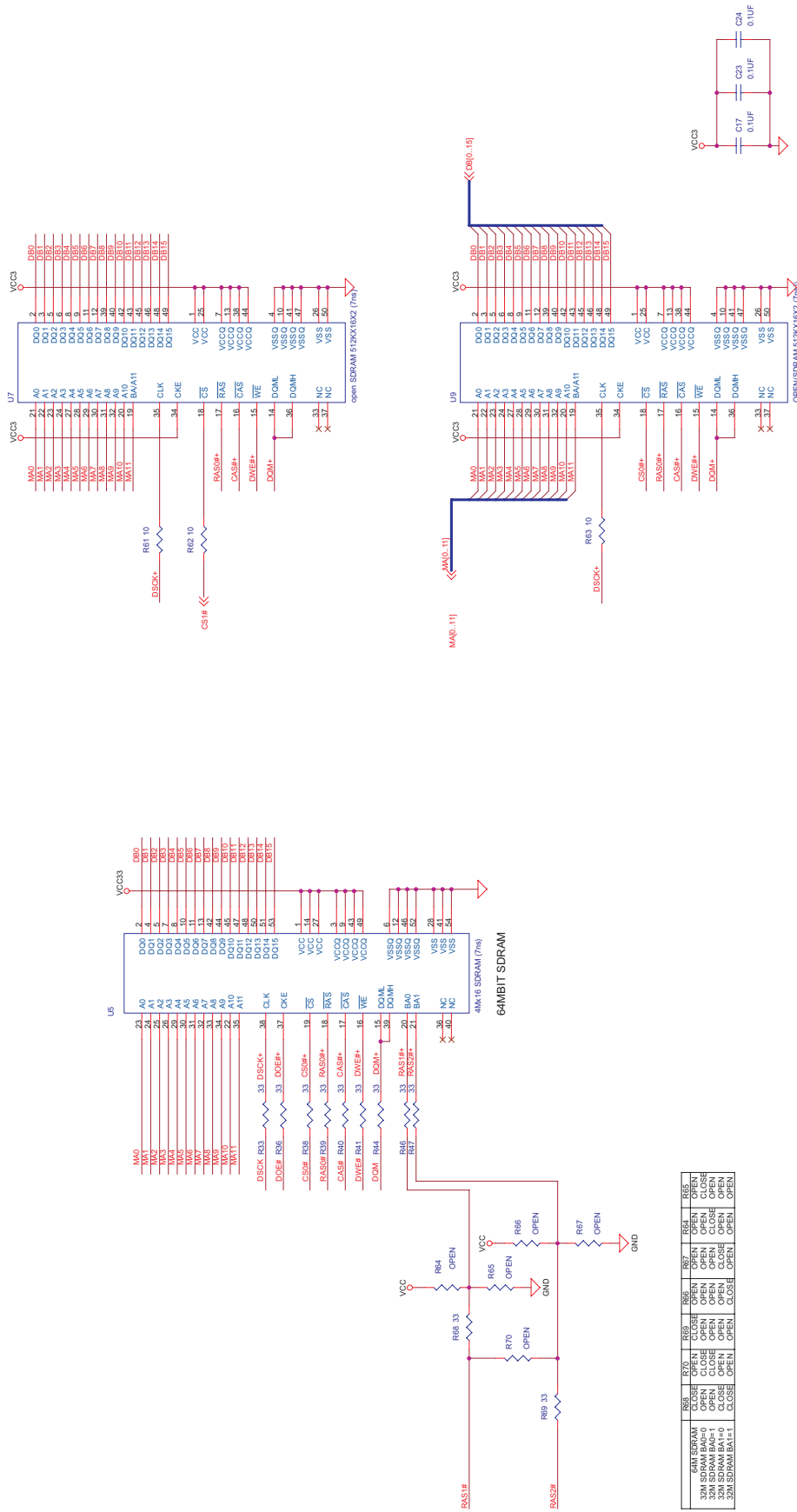
# Vibratto-II



Pin	Symbol	Function	Level	Component
1	SPDIF-IN	SPDIF IN	0	
2	SPDIF-EN	SPDIF EN	1	
3	SPDIF-CLK	SPDIF CLK	1	
4	SPDIF-TRN	SPDIF TRN	1	
5	SPDIF-REF	SPDIF REF	1	
6	SPDIF-TRN	SPDIF TRN	1	
7	SPDIF-REF	SPDIF REF	1	
8	SPDIF-TRN	SPDIF TRN	1	
9	SPDIF-REF	SPDIF REF	1	
10	SPDIF-TRN	SPDIF TRN	1	
11	SPDIF-REF	SPDIF REF	1	
12	SPDIF-TRN	SPDIF TRN	1	
13	SPDIF-REF	SPDIF REF	1	
14	SPDIF-TRN	SPDIF TRN	1	
15	SPDIF-REF	SPDIF REF	1	
16	SPDIF-TRN	SPDIF TRN	1	
17	SPDIF-REF	SPDIF REF	1	
18	SPDIF-TRN	SPDIF TRN	1	
19	SPDIF-REF	SPDIF REF	1	
20	SPDIF-TRN	SPDIF TRN	1	
21	SPDIF-REF	SPDIF REF	1	
22	SPDIF-TRN	SPDIF TRN	1	
23	SPDIF-REF	SPDIF REF	1	
24	SPDIF-TRN	SPDIF TRN	1	
25	SPDIF-REF	SPDIF REF	1	
26	SPDIF-TRN	SPDIF TRN	1	
27	SPDIF-REF	SPDIF REF	1	
28	SPDIF-TRN	SPDIF TRN	1	
29	SPDIF-REF	SPDIF REF	1	
30	SPDIF-TRN	SPDIF TRN	1	
31	SPDIF-REF	SPDIF REF	1	
32	SPDIF-TRN	SPDIF TRN	1	
33	SPDIF-REF	SPDIF REF	1	
34	SPDIF-TRN	SPDIF TRN	1	
35	SPDIF-REF	SPDIF REF	1	
36	SPDIF-TRN	SPDIF TRN	1	
37	SPDIF-REF	SPDIF REF	1	
38	SPDIF-TRN	SPDIF TRN	1	
39	SPDIF-REF	SPDIF REF	1	
40	SPDIF-TRN	SPDIF TRN	1	
41	SPDIF-REF	SPDIF REF	1	
42	SPDIF-TRN	SPDIF TRN	1	
43	SPDIF-REF	SPDIF REF	1	
44	SPDIF-TRN	SPDIF TRN	1	
45	SPDIF-REF	SPDIF REF	1	
46	SPDIF-TRN	SPDIF TRN	1	
47	SPDIF-REF	SPDIF REF	1	
48	SPDIF-TRN	SPDIF TRN	1	
49	SPDIF-REF	SPDIF REF	1	
50	SPDIF-TRN	SPDIF TRN	1	
51	SPDIF-REF	SPDIF REF	1	
52	SPDIF-TRN	SPDIF TRN	1	
53	SPDIF-REF	SPDIF REF	1	
54	SPDIF-TRN	SPDIF TRN	1	
55	SPDIF-REF	SPDIF REF	1	
56	SPDIF-TRN	SPDIF TRN	1	
57	SPDIF-REF	SPDIF REF	1	
58	SPDIF-TRN	SPDIF TRN	1	
59	SPDIF-REF	SPDIF REF	1	
60	SPDIF-TRN	SPDIF TRN	1	
61	SPDIF-REF	SPDIF REF	1	
62	SPDIF-TRN	SPDIF TRN	1	
63	SPDIF-REF	SPDIF REF	1	
64	SPDIF-TRN	SPDIF TRN	1	
65	SPDIF-REF	SPDIF REF	1	
66	SPDIF-TRN	SPDIF TRN	1	
67	SPDIF-REF	SPDIF REF	1	
68	SPDIF-TRN	SPDIF TRN	1	
69	SPDIF-REF	SPDIF REF	1	
70	SPDIF-TRN	SPDIF TRN	1	
71	SPDIF-REF	SPDIF REF	1	
72	SPDIF-TRN	SPDIF TRN	1	
73	SPDIF-REF	SPDIF REF	1	
74	SPDIF-TRN	SPDIF TRN	1	
75	SPDIF-REF	SPDIF REF	1	
76	SPDIF-TRN	SPDIF TRN	1	
77	SPDIF-REF	SPDIF REF	1	
78	SPDIF-TRN	SPDIF TRN	1	
79	SPDIF-REF	SPDIF REF	1	
80	SPDIF-TRN	SPDIF TRN	1	
81	SPDIF-REF	SPDIF REF	1	
82	SPDIF-TRN	SPDIF TRN	1	
83	SPDIF-REF	SPDIF REF	1	
84	SPDIF-TRN	SPDIF TRN	1	
85	SPDIF-REF	SPDIF REF	1	
86	SPDIF-TRN	SPDIF TRN	1	
87	SPDIF-REF	SPDIF REF	1	
88	SPDIF-TRN	SPDIF TRN	1	
89	SPDIF-REF	SPDIF REF	1	
90	SPDIF-TRN	SPDIF TRN	1	
91	SPDIF-REF	SPDIF REF	1	
92	SPDIF-TRN	SPDIF TRN	1	
93	SPDIF-REF	SPDIF REF	1	
94	SPDIF-TRN	SPDIF TRN	1	
95	SPDIF-REF	SPDIF REF	1	
96	SPDIF-TRN	SPDIF TRN	1	
97	SPDIF-REF	SPDIF REF	1	
98	SPDIF-TRN	SPDIF TRN	1	
99	SPDIF-REF	SPDIF REF	1	
100	SPDIF-TRN	SPDIF TRN	1	

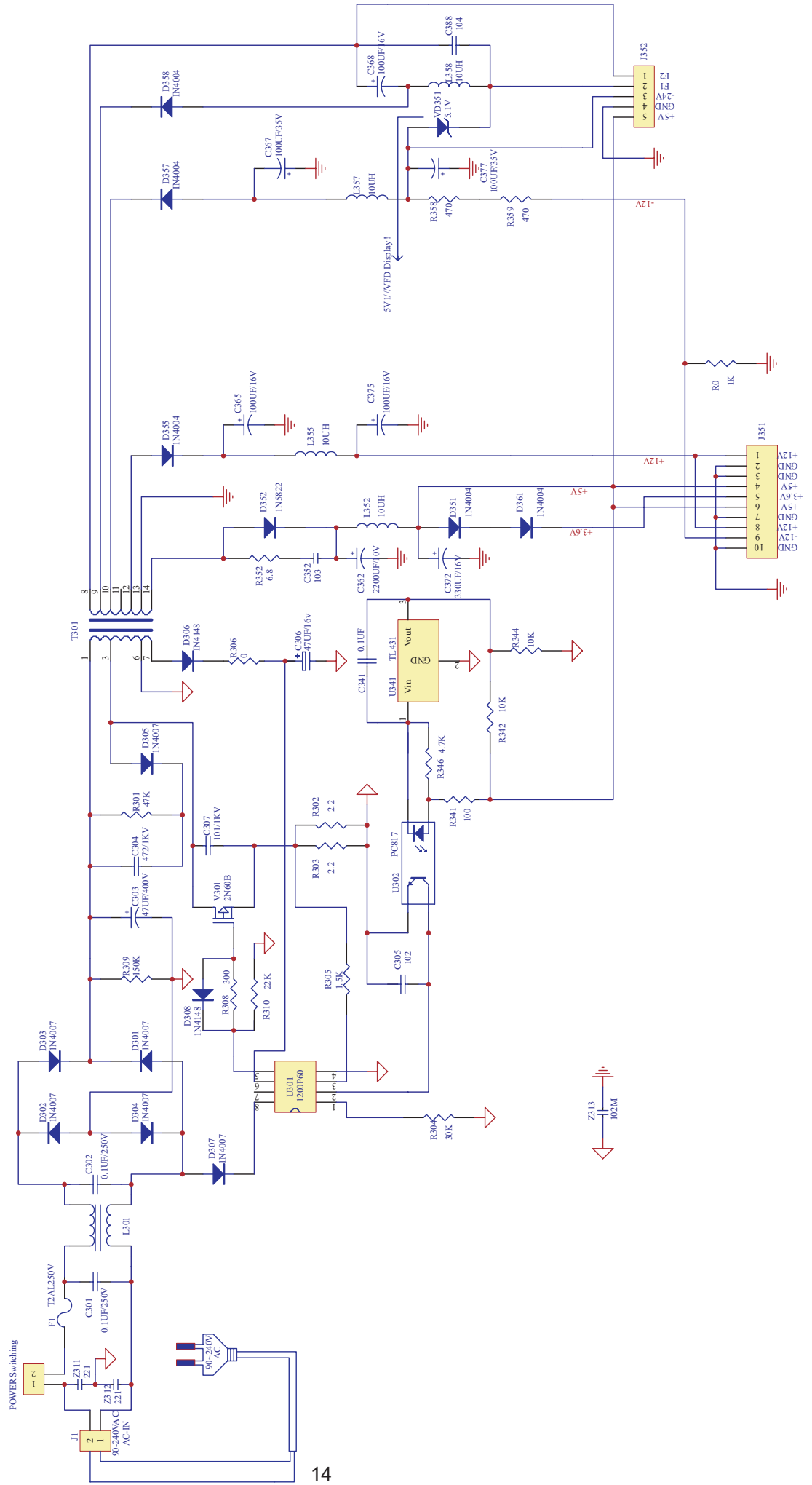
Pin	Symbol	Function	Level	Component
1	LA1	LA1	1	
2	LA2	LA2	1	
3	LA3	LA3	1	
4	LA4	LA4	1	
5	LA5	LA5	1	
6	LA6	LA6	1	
7	LA7	LA7	1	
8	LA8	LA8	1	
9	LA9	LA9	1	
10	LA10	LA10	1	
11	LA11	LA11	1	
12	LA12	LA12	1	
13	LA13	LA13	1	
14	LA14	LA14	1	
15	LA15	LA15	1	
16	LA16	LA16	1	
17	LA17	LA17	1	
18	LA18	LA18	1	
19	LA19	LA19	1	
20	LA20	LA20	1	
21	LA21	LA21	1	
22	LA22	LA22	1	
23	LA23	LA23	1	
24	LA24	LA24	1	
25	LA25	LA25	1	

# SCHEMATIC DIAGRAMS F-SDRAM

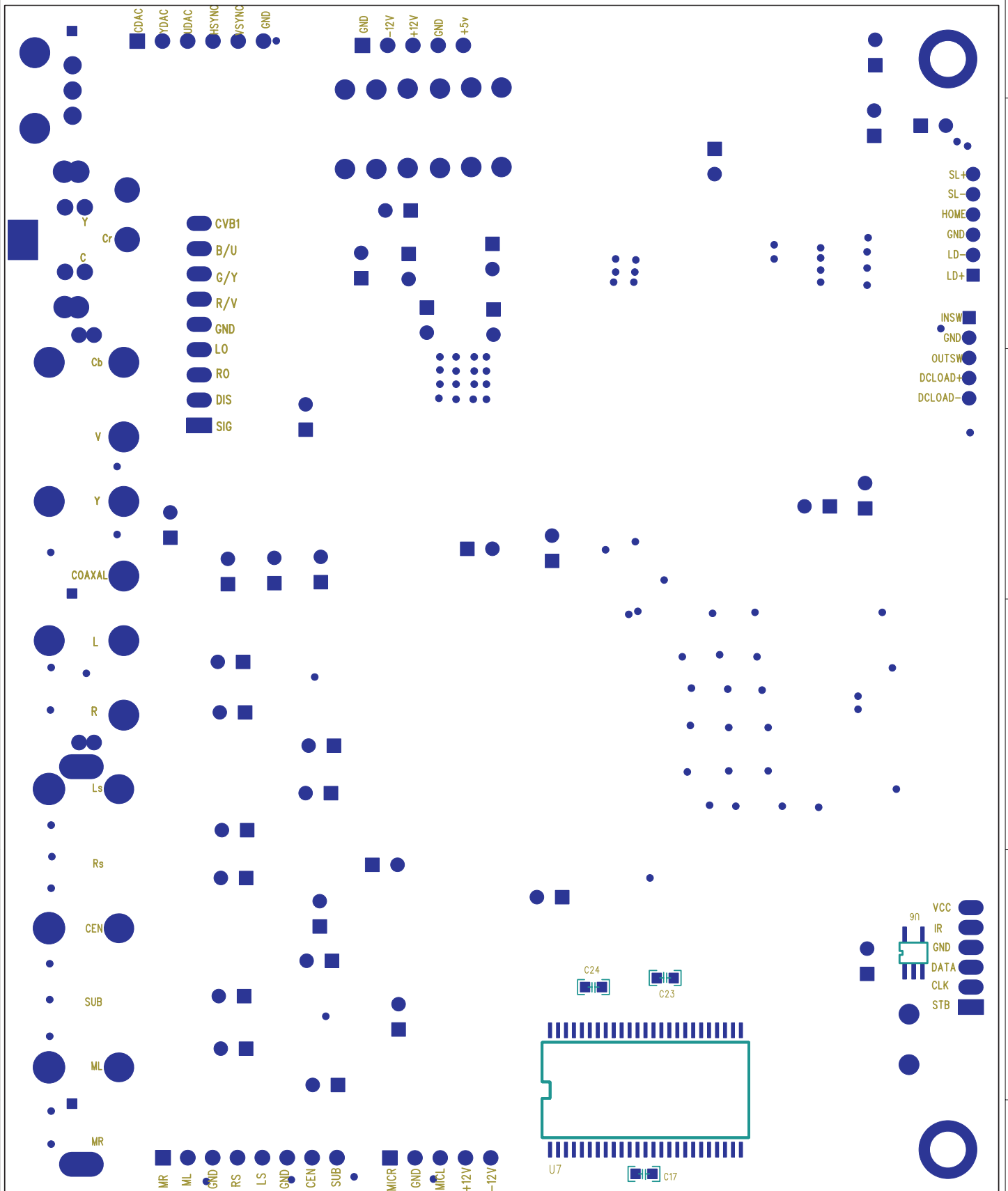


DO0	R88	R89	R90	R91	R92	R93	R94	R95	R96	R97	R98	R99	R100
DO1	OPEN	OPEN	OPEN	OPEN	OPEN	OPEN	OPEN	OPEN	OPEN	OPEN	OPEN	OPEN	OPEN
DO2	OPEN	OPEN	OPEN	OPEN	OPEN	OPEN	OPEN	OPEN	OPEN	OPEN	OPEN	OPEN	OPEN
DO3	OPEN	OPEN	OPEN	OPEN	OPEN	OPEN	OPEN	OPEN	OPEN	OPEN	OPEN	OPEN	OPEN
DO4	OPEN	OPEN	OPEN	OPEN	OPEN	OPEN	OPEN	OPEN	OPEN	OPEN	OPEN	OPEN	OPEN
DO5	OPEN	OPEN	OPEN	OPEN	OPEN	OPEN	OPEN	OPEN	OPEN	OPEN	OPEN	OPEN	OPEN
DO6	OPEN	OPEN	OPEN	OPEN	OPEN	OPEN	OPEN	OPEN	OPEN	OPEN	OPEN	OPEN	OPEN
DO7	OPEN	OPEN	OPEN	OPEN	OPEN	OPEN	OPEN	OPEN	OPEN	OPEN	OPEN	OPEN	OPEN
DO8	OPEN	OPEN	OPEN	OPEN	OPEN	OPEN	OPEN	OPEN	OPEN	OPEN	OPEN	OPEN	OPEN
DO9	OPEN	OPEN	OPEN	OPEN	OPEN	OPEN	OPEN	OPEN	OPEN	OPEN	OPEN	OPEN	OPEN
DO10	OPEN	OPEN	OPEN	OPEN	OPEN	OPEN	OPEN	OPEN	OPEN	OPEN	OPEN	OPEN	OPEN
DO11	OPEN	OPEN	OPEN	OPEN	OPEN	OPEN	OPEN	OPEN	OPEN	OPEN	OPEN	OPEN	OPEN
DO12	OPEN	OPEN	OPEN	OPEN	OPEN	OPEN	OPEN	OPEN	OPEN	OPEN	OPEN	OPEN	OPEN
DO13	OPEN	OPEN	OPEN	OPEN	OPEN	OPEN	OPEN	OPEN	OPEN	OPEN	OPEN	OPEN	OPEN
DO14	OPEN	OPEN	OPEN	OPEN	OPEN	OPEN	OPEN	OPEN	OPEN	OPEN	OPEN	OPEN	OPEN
DO15	OPEN	OPEN	OPEN	OPEN	OPEN	OPEN	OPEN	OPEN	OPEN	OPEN	OPEN	OPEN	OPEN

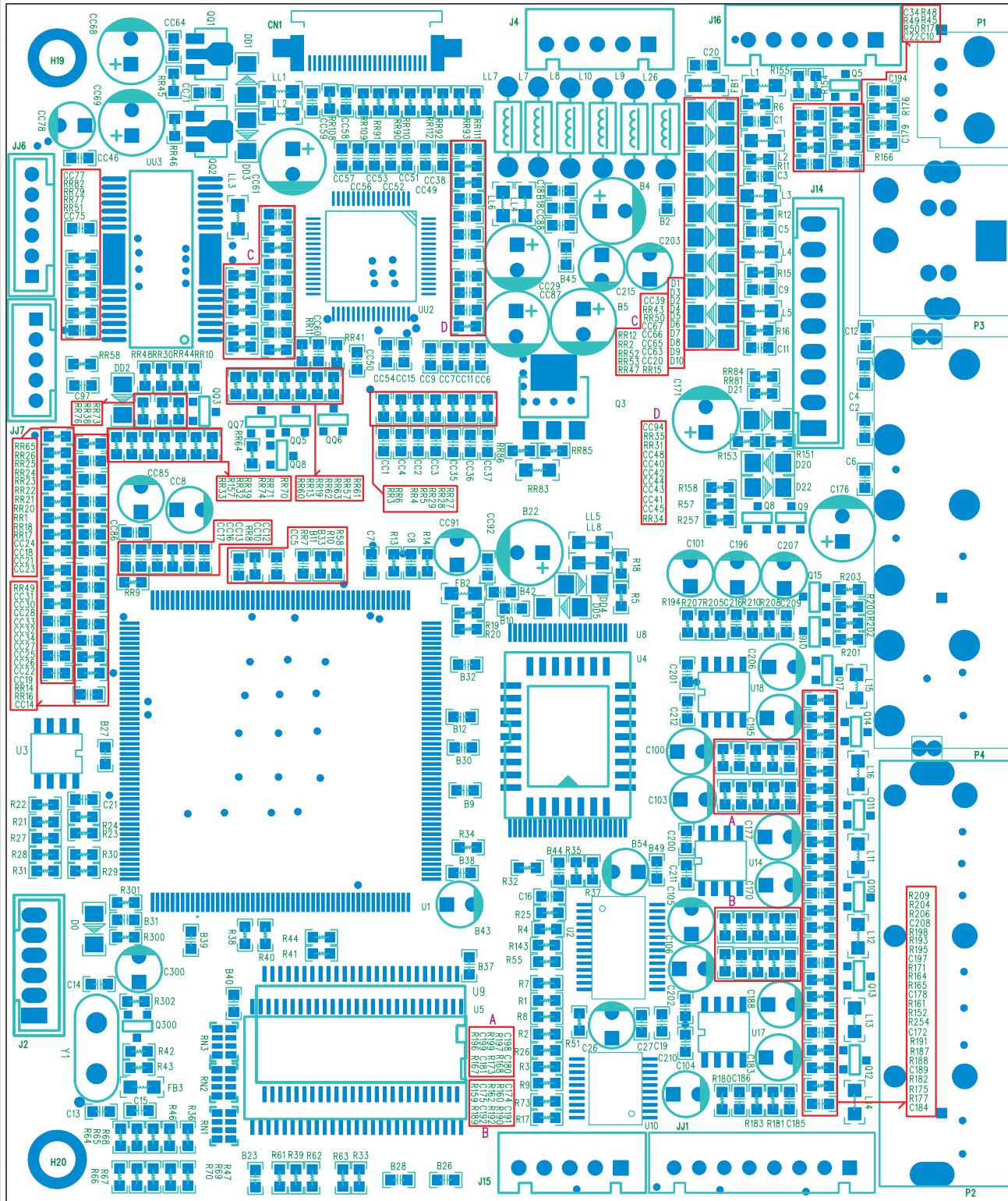
# SCHEMATIC DIAGRAMS



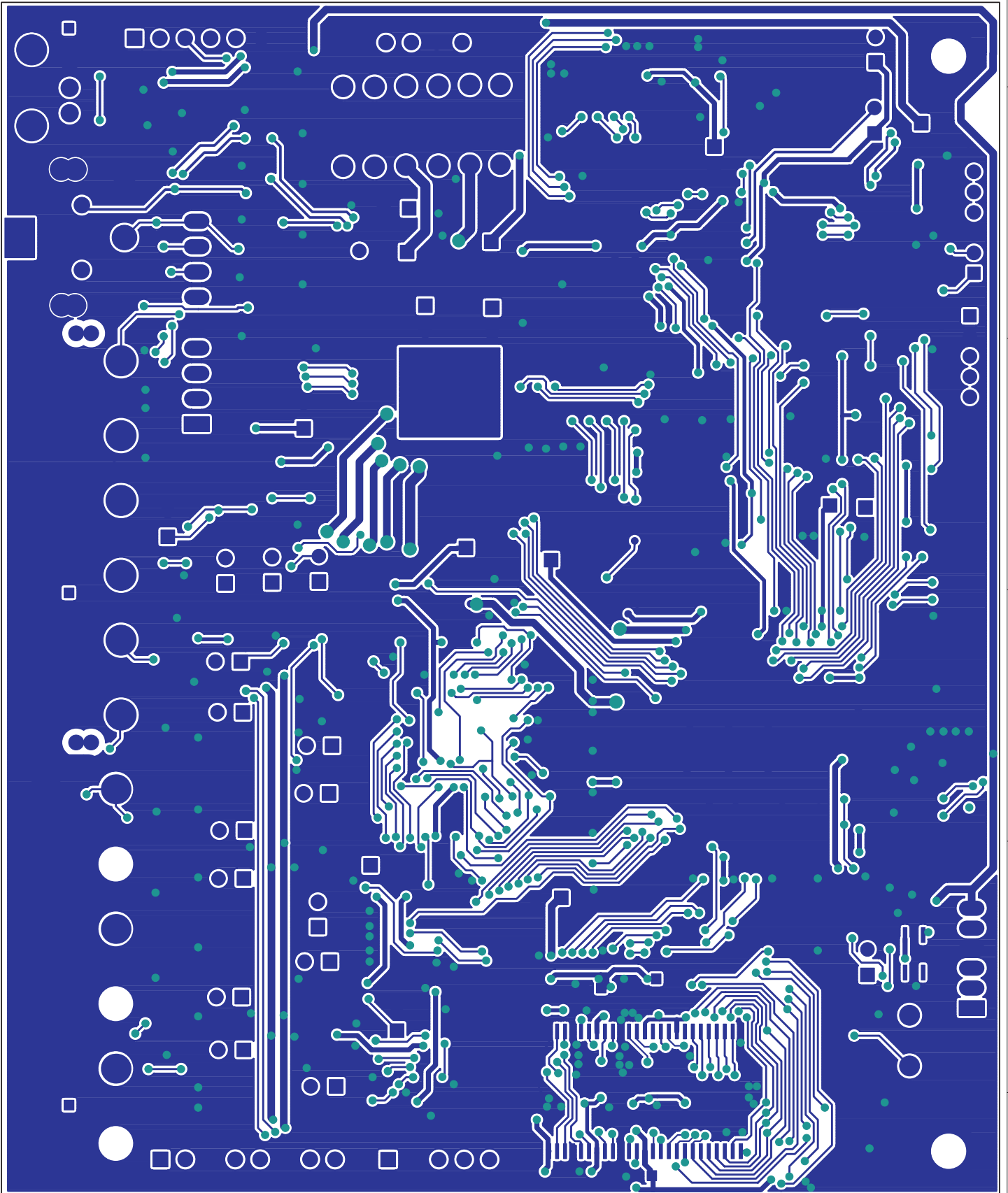
PRINTED CIRCUIT BOARDS  
 MAIN PCB  
 BOTTOM TEXT VIEW



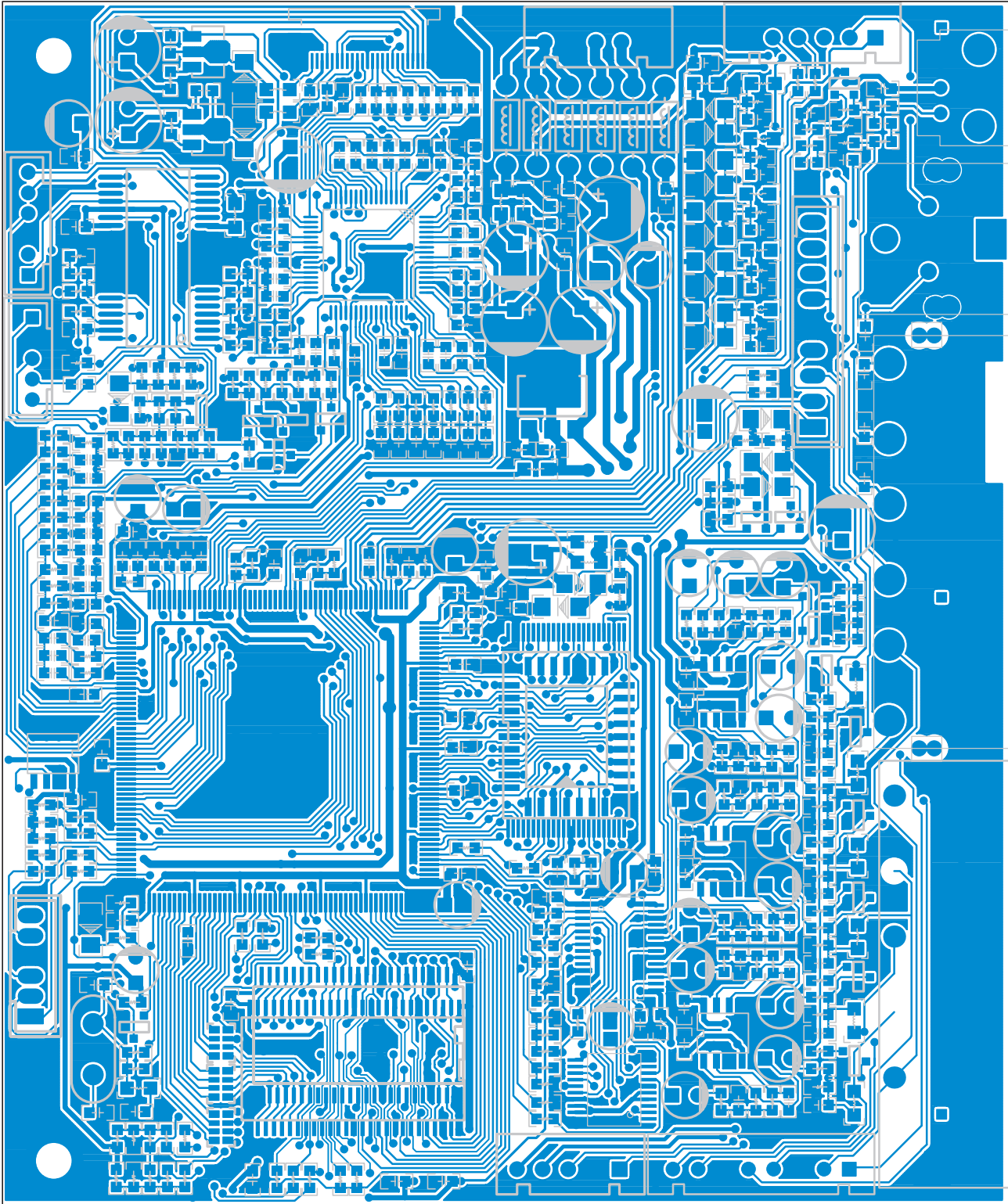
PRINTED CIRCUIT BOARDS  
MAIN PCB  
TOP TEXT VIEW



PRINTED CIRCUIT BOARDS  
MAIN PCB  
BOTTOM LAYOUT VIEW



PRINTED CIRCUIT BOARDS  
MAIN PCB  
TOP LAYOUT VIEW

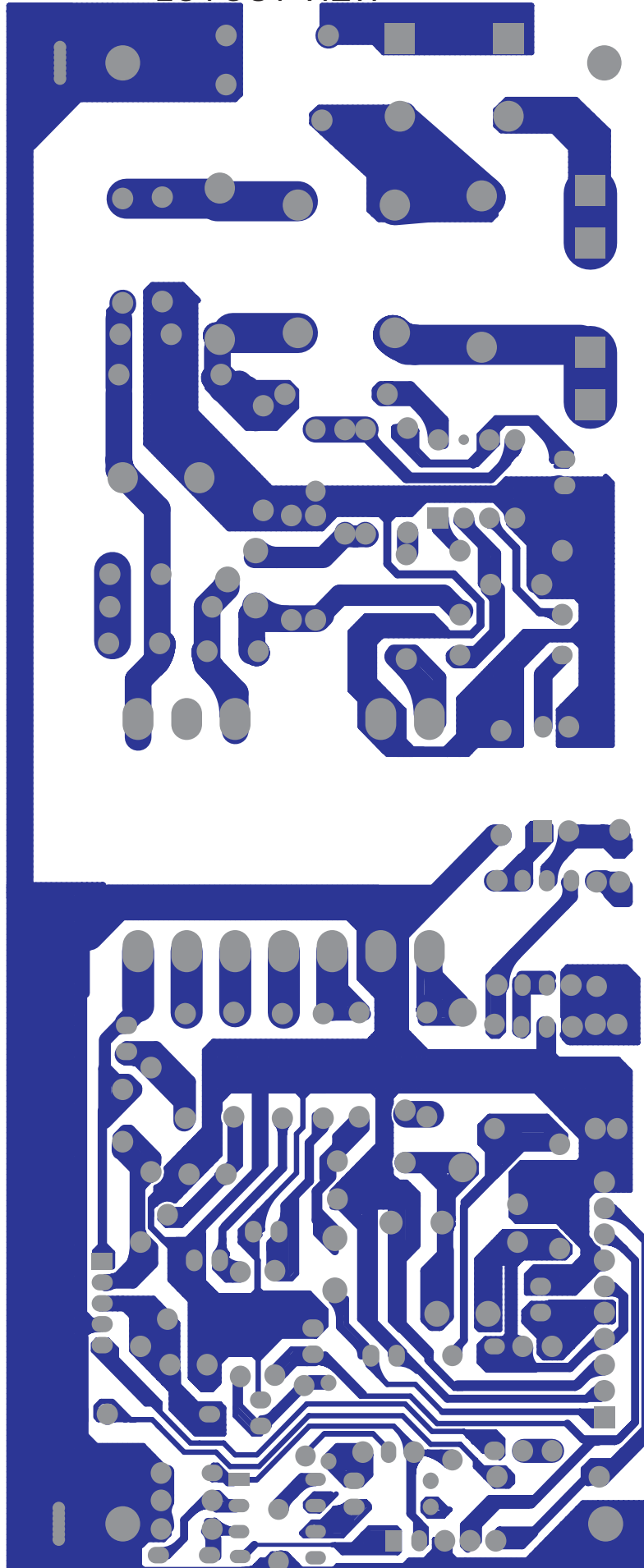




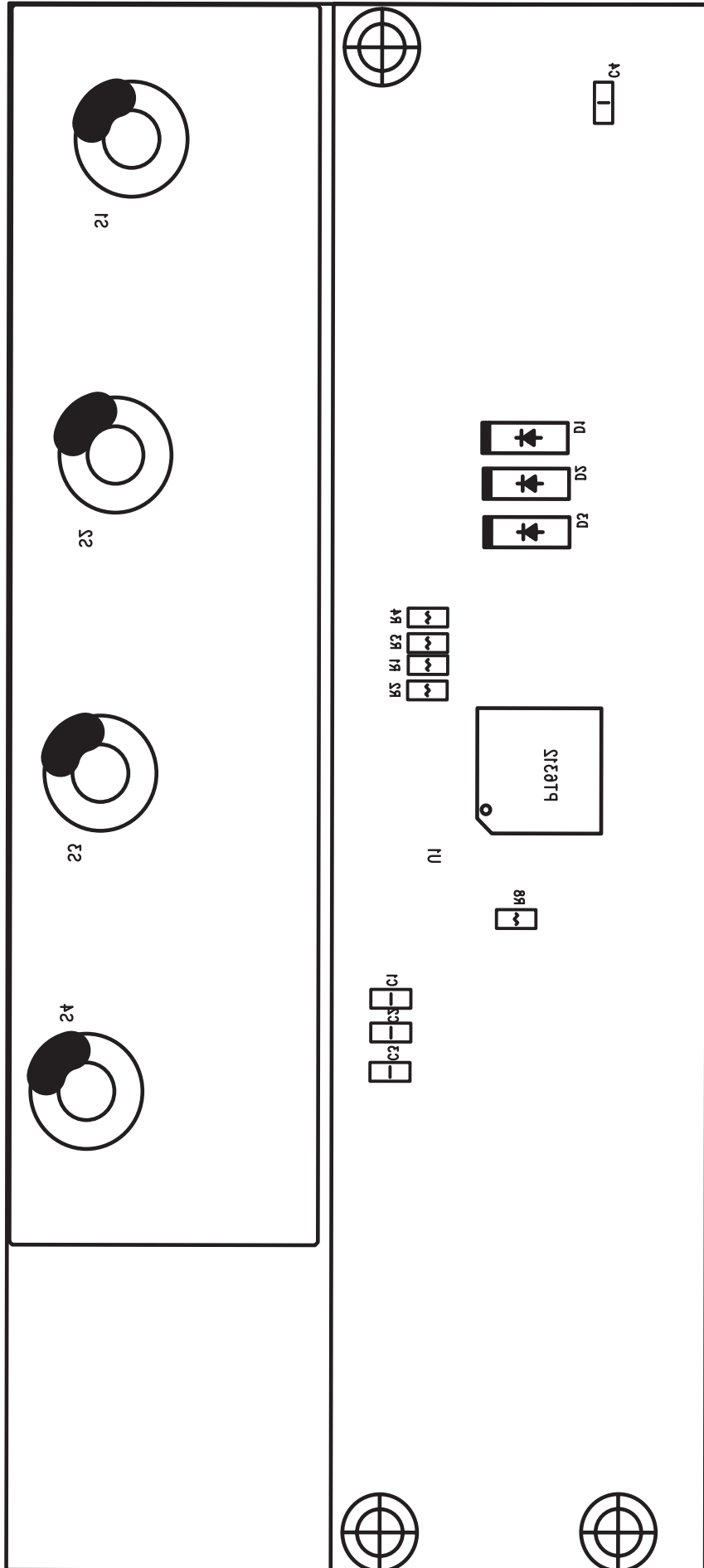




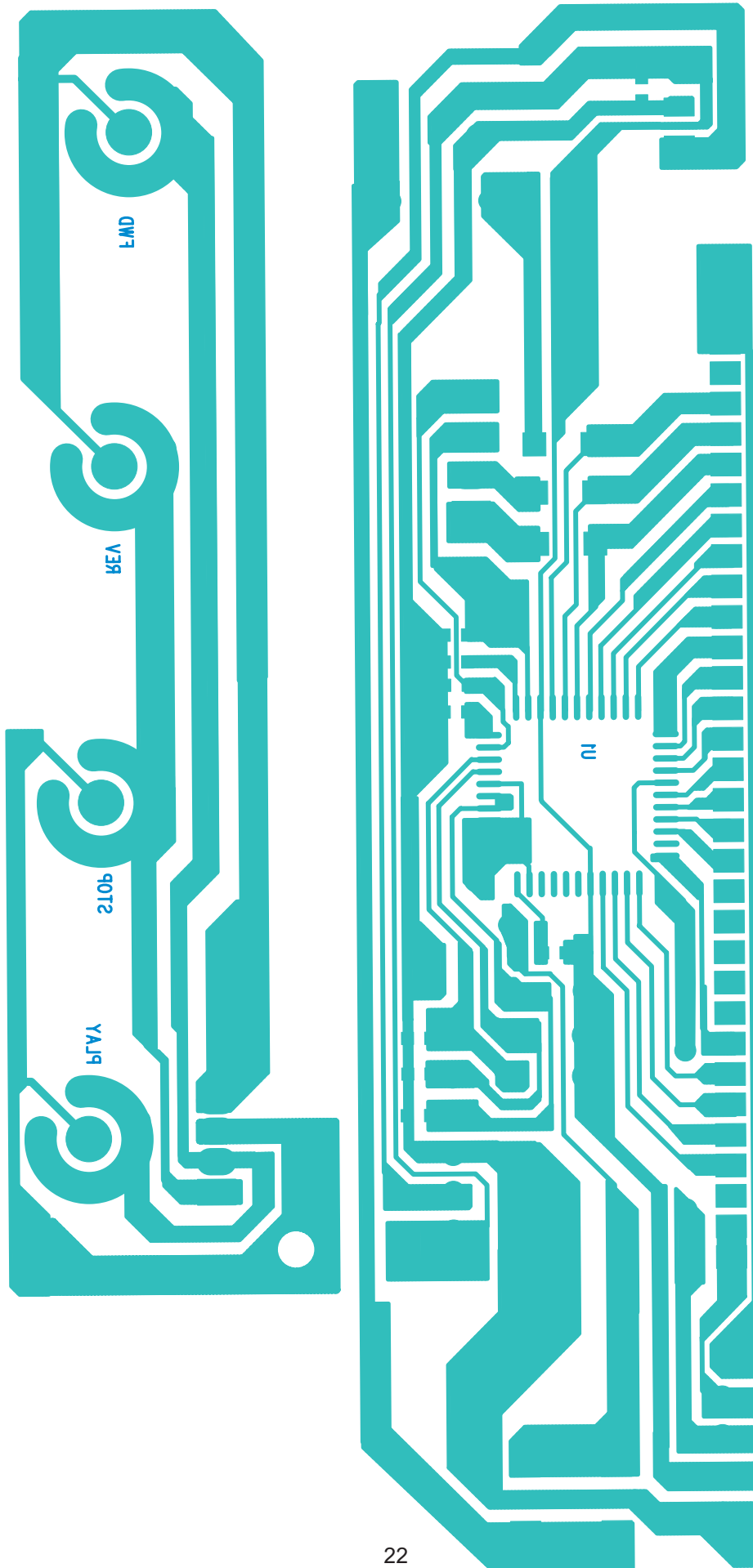
PRINTED CIRCUIT BOARDS  
POWER PCB  
LOYOUT VIEW



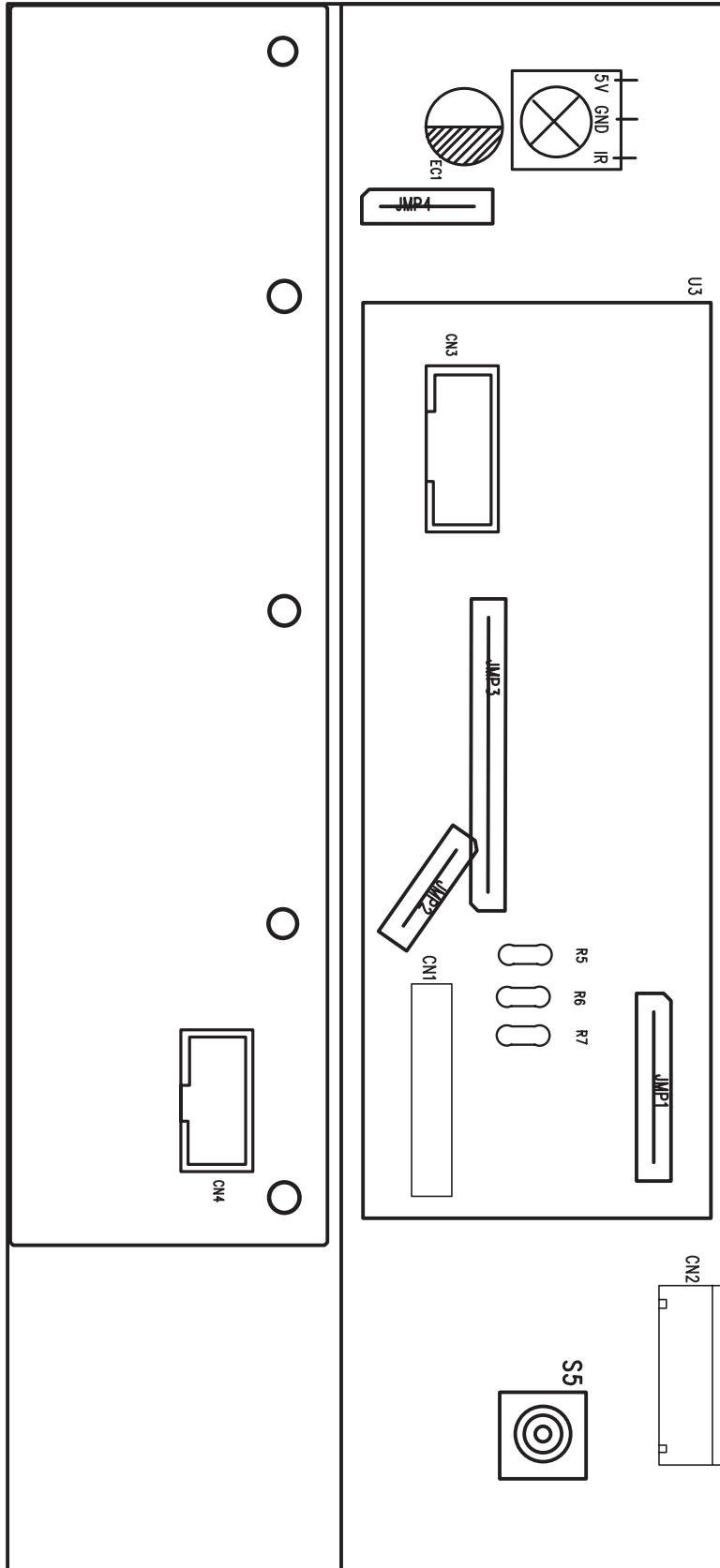
PRINTED CIRCUIT BOARDS  
VFD TEXT VIEW(BOTTOM)



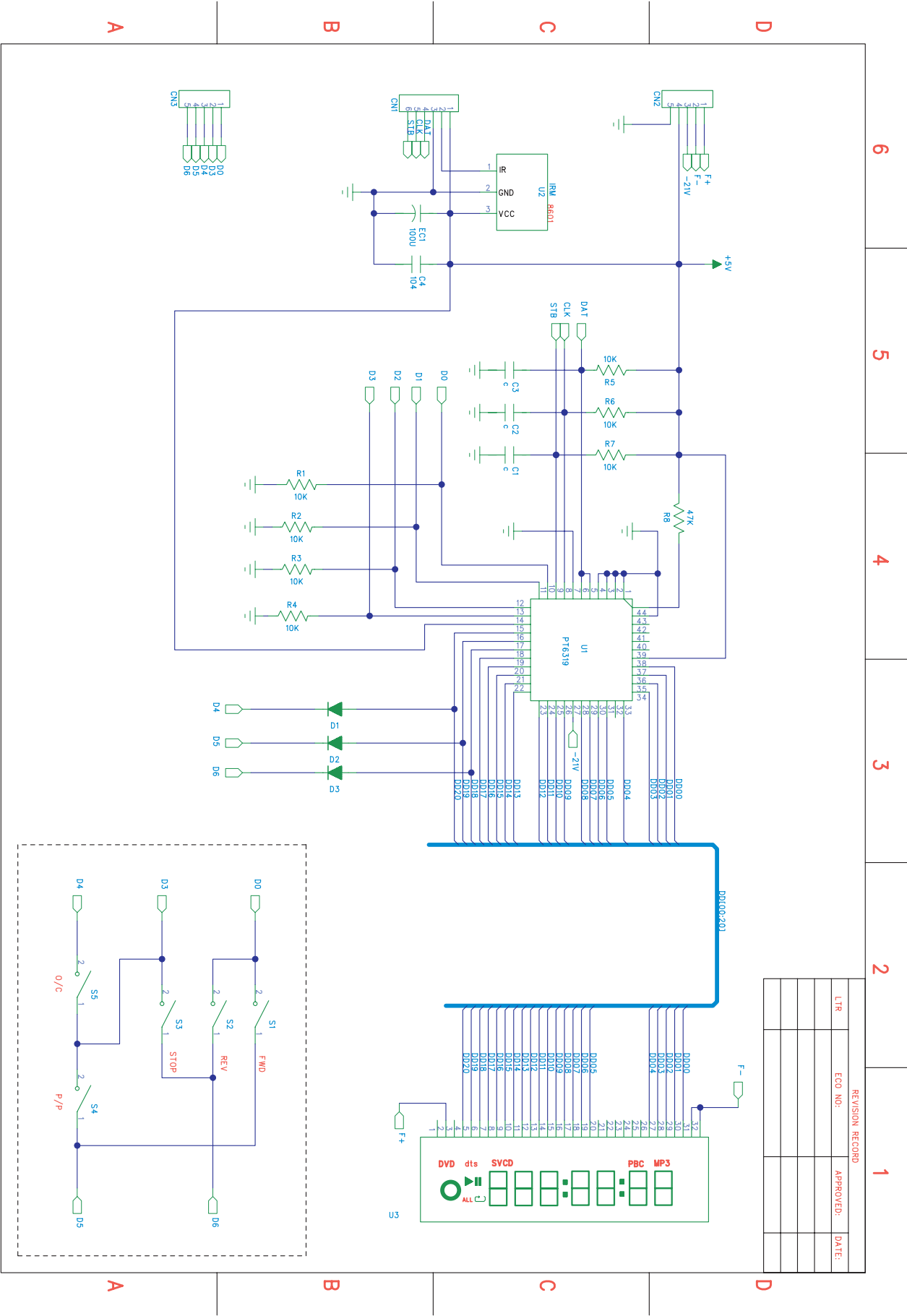
PRINTED CIRCUIT BOARDS  
VFD LAYOUT VIEW



# PRINTED CIRCUIT BOARDS VFD TEXT VIEW (TOP)



# PRINTED CIRCUIT BOARDS VFD SCHEMATIC VIEW



KEY

REVISION RECORD			
LTR	ECO NO.	APPROVED:	DATE:

# ELECTRICAL PARTS LIST

## MAIN BOARD

	PART NO.	DESCRIPTION & SPECIFICATION	Q'TY	LOCATION
1	CAP-ESG004U7-FEB	Elect Cap 4.7uF 50V +80/-20%	1.00	CC8 :(1)
1	CAP-ESH0010U-CEB	Elect Cap 10uF 16V +80/-20%	15.00	B43 :(1) B54 :(1) C100-1 :(2) C103-6 :(4) C195-6 :(2) C203 :(1) C206-7 :(2) C26 :(1) C300 :(1)
1	CAP-ESJ0100U-CEB	Elect Cap 100uF 16V +80/-20%	9.00	B22 :(1) B4 :(1) CC61 :(1) CC68-9 :(2) CC78 :(1) CC85 :(1) CC87 :(1) CC91 :(1)
1	CAP-ESJ0220U-DEB	Elect Cap 220uF 25V +80/-20%	4.00	B5 :(1) C171 :(1) C176 :(1) CC29 :(1)
1	CAP-STB0027P-FCR	Ceramic Chip Cap (NPO) 27pF 50V +/-5% 0603	2.00	C13-4 :(2)
1	CAP-STB0033P-DDD	Ceramic Chip Cap 33pF 25V +/-10% Reel 0603	3.00	CC35-7 :(3)
1	CAP-STB0047P-DDD	Ceramic Chip Cap 47pF 25V +/-5% Reel 0603	1.00	CC25 :(1)
1	CAP-STB0068P-FCD	Ceramic Chip Cap 68pF 50V +/-5% Reel 0603	1.00	CC23 :(1)
1	CAP-STC0100P-FCD	Ceramic Chip Cap 100pF 50V +/-5% Reel 0603	3.00	C198 :(1) C209 :(1) CC57 :(1)
1	CAP-STC0220P-FCD	Ceramic Chip Cap 220pF 50V +/-5% Reel 0603	1.00	CC65 :(1)
1	CAP-STC0470P-FCD	Ceramic Chip Cap 470pF 50V +/-5% Reel 0603	15.00	C1-6 :(6) C9-12 :(4) CC30 :(1) CC33 :(1) CC41 :(1) CC43 :(1) CC86 :(1)
1	CAP-STC0680P-FDD	Ceramic Chip Cap 680pF 50V +/-10% Reel 0603	5.00	CC48 :(1) CC51-3 :(3) CC56 :(1)
1	CAP-STD1000P-FDD	Ceramic Chip Cap 1000pF 50V +/-10% Reel 0603	8.00	C197 :(1) C208 :(1) CC1-4 :(4) CC64 :(1) CC71 :(1)
1	CAP-STD2200P-FDD	Ceramic Chip Cap 2200pF 50V +/-10% Reel 0603	2.00	C199 :(1) C216 :(1)
1	CAP-STD4700P-DDD	Ceramic Chip Cap 4700pF 25V +/-10% Reel 0603	3.00	CC11 :(1) CC38 :(1) CC6 :(1)
1	CAP-STD5600P-FDD	Ceramic Chip Cap 5600pF 50V +/-10% Reel 0603	2.00	CC17 :(1) CC28 :(1)
1	CAP-STE0D01U-FCD	Ceramic Chip Cap 0.01uF 50V +/-5% Reel 0603	2.00	CC45 :(1) CC67 :(1)
1	CAP-STED022U-FDD	Ceramic Chip Cap 0.022uF 50V +/-10% Reel 0603	2.00	CC31-2 :(2)
1	CAP-STED033U-FED	Ceramic Chip Cap(SMT) 0.033uF 50V +80/-20% Reel 0	1.00	CC66 :(1)
1	CAP-STED047U-DDD	Ceramic Chip Cap 0.047uF 25V +/-10% Reel 0603	2.00	CC21 :(1) CC54 :(1)

# ELECTRICAL PARTS LIST

## MAIN BOARD

PART NO.	DESCRIPTION & SPECIFICATION	Q'TY	LOCATION
1	CAP-STF0D10U-DDD Ceramic Chip Cap 0.1uF 25V +/-10% Reel 0603	59.00	B10 :(1) B11-2 :(2) B18 :(1) B2 :(1) B23 :(1) B26-8 :(3) B30-3 :(4) B37-40 :(4) B42 :(1) B44-5 :(2) B49 :(1) B9 :(1) C16-7 :(2) C194 :(1) C200 :(1) C201-2 :(2) C210-2 :(3) C22 :(1) C23-4 :(2) C27 :(1) C34 :(1) C7-8 :(2) CC13-5 :(3) CC22 :(1) CC24 :(1) CC26-7 :(2) CC34 :(1) CC39 :(1) CC40 :(1) CC42 :(1) CC44 :(1) CC49 :(1) CC50 :(1) CC5 :(1) CC58-9 :(2) CC60 :(1) CC75 :(1) CC77 :(1) CC94 :(1)
1	CAP-STF0D22U-DDD Ceramic Chip Cap 0.22uF 25V +/-10% Reel 0603	1.00	CC63 :(1)
1	CAP-STG0001U-DDD Ceramic Chip Cap 1uF 25V +/-10% Reel 0603	5.00	CC10 :(1) CC12 :(1) CC20 :(1) CC88 :(1) CC92 :(1)
1	CLS-SE02D4UH Inductor 2.4UH SMT Type 0805 10%	5.00	L1-5 :(5)
1	DIO-R000GS1G-ZB0 Rectifier Diode 1N4004(GS1G) SMA Pack	1.00	DD4 :(1)
1	DIO-S01N4148-ZS0 Switching Diode 1N4148 SMT Pack	17.00	D0 :(1) D1-9 :(9) D10 :(1) D20-2 :(3) DD1-3 :(3)
1	FRB-R00010UH-Z Ferrite Bead,Round shape, 10UH, DIP Type	6.00	L26 :(1) L7-10 :(4) LL7 :(1)
1	FRB-S000120R-B Ferrite Bead 120 OHM@ 100MHz 2012(0805) (Sunlo	11.00	FB1-2 :(2) L15-6 :(2) LL1-6 :(6) LL8 :(1)
1	ICS-A0004558-CMC Dual Operational Amp. IC TJM4558 8 Pins SO8	1.00	U18 :(1)
1	ICS-D024C02N-CAC 2K Serial Eeprom IC AT24C02N-10SI-1.8	1.00	U3 :(1)
1	ICS-D49F8192-CWR FLASH IC AT49F8192AT 70TC 48Pins TSOP	1.00	U4 :(1)
用:	ICS-D29L800T-CWR AMIC AM29L800TV-70 TSOP 48PINS	1.00	
1	ICS-D54S416T-CW5 SDRAM IC TM54S416T(TMC) 1Mx 16x4 54Pins TSC	1.00	U5 :(1)
用:	ICS-DAD81F64-CW5 SDRAM Tiwin AD81F641642J-7 4x1Mx16Bit 54Pins TS	1.00	
用:	ICS-D0041620-CW5 SDRAM IC D0041620 1Mx16x4 54Pins TSOP	1.00	
1	ICS-E0006603-CVZ Pre-AMP IC ES6603 64Pins TQFP	1.00	UU2 :(1)
1	ICS-E0006698-C39 Digital Signal Processing IC ES6698F 208Pins PQF	1.00	U1 :(1)
1	ICS-H0001196-CNM Digital Audio Interface IC DA1196H, SMT, SSOP Package,28Pins	1.00	U2 :(1)
1	ICS-I1117ADJ-C9A-MZZ Regulator IC AMS1117CD-ADJ TO-252 Plastic Packag	1.00	Q3 :(1)
1	ICS-P0005868-COM Driver IC AM5868S HSOP 28 Pins	1.00	UU3 :(1)
1	JCK-RAN003D2-ZFH RCA Jack, 6 Position, Blue Green White on Upper And	1.00	P4 :(1)

# ELECTRICAL PARTS LIST

## MAIN BOARD

PART NO.	DESCRIPTION & SPECIFICATION	Q'TY	LOCATION
1	JCK-VCZ003D2-ZAD	Comp/S- Video Jack Gold Plated	1.00 P3 :(1)
1	PCB-H2000312-LFB	Main PCB (FR-4) Double Side 100x120x1.6mm Ver0.2	1.00 PCB :(1)
1	RES-IAB0010R-CHB	Chip Res 10R Ohm 1/16W +/-5% 0603	6.00 R61-3 :(3) RR19 :(1) RR45-6 :(2)
1	RES-IAB0033R-CHB	Chip Res 33 Ohm 1/16W +/-5% 0603	31.00 R143 :(1) R154-5 :(2) R17 :(1) R23-4 :(2) R25-6 :(2) R28-31 :(4) R33 :(1) R36 :(1) R38-41 :(4) R4 :(1) R44 :(1) R46-7 :(2) R55 :(1) R68-9 :(2) RR2 :(1) RR27-9 :(3) RR81 :(1) RR84 :(1)
1	RES-IAC0470R-CHB	Chip Res 470 Ohm 1/16W +/-5% 0603	1.00 RR85 :(1)
1	RES-IAD0001K-CHB	Chip Res 1K Ohm 1/16W +/-5% 0603	13.00 R153 :(1) R193 :(1) R198 :(1) R200-1 :(2) R204 :(1) R209 :(1) R21-2 :(2) R48-9 :(2) RR10 :(1) RR44 :(1)
1	RES-IAD003K3-CHB	Chip Res 3.3K Ohm 1/16W +/-5% 0603	4.00 RR3-6 :(4)
1	RES-IAD004K7-CHB	Chip Res 4K7 Ohm 1/16W +/-5% 0603 (RES-IAD004K7	7.00 R27 :(1) R7-10 :(4) R73 :(1) RR76 :(1)
1	RES-IAE0010K-CHB	Chip Res 10K Ohm 1/16W +/-5% 0603 (RES-IAE0010K	13.00 R194 :(1) R196 :(1) R205 :(1) R207 :(1) R300-1 :(2) RR1 :(1) RR17 :(1) RR30 :(1) RR57 :(1) RR7 :(1) RR70 :(1) RR77 :(1)
1	RES-IAE0022K-CHB	Chip Res 22K Ohm 1/16W +/-5% 0603	3.00 RR48 :(1) RR74 :(1) RR82 :(1)
1	RES-IAE0033K-CHB	Chip Res 33K Ohm 1/16W +/-5% 0603	1.00 RR15 :(1)
1	RES-IAF0100K-CHB	Chip Res 100K Ohm 1/16W +/-5% 0603 (RES-IAF0100	5.00 R195 :(1) R206 :(1) R257 :(1) R42 :(1) RR13 :(1)
1	RES-IAG0001M-CHB	Chip Res 1M Ohm 1/16W +/-5% 0603 (RES-IAG0001M	1.00 RR73 :(1)
1	RES-IBA0000R-CHB	Chip Res 0 Ohm 1/10W +/-5% 0603	22.00 C179 :(1) R14 :(1) R157 :(1) R18 :(1) R43 :(1) RR108-112 :(5) RR11 :(1) RR31 :(1) RR41 :(1) RR43 :(1) RR50 :(1) RR61 :(1) RR62 :(1) RR65 :(1) RR71 :(1) RR79 :(1) RR91-2 :(2)
1	RES-IBA0001R-CHE	Chip Res 1 Ohm 1/10W +/-5% 1206	1.00 DD5 :(1)
1	RES-IBA003R3-CHC	Ceramic Chip Res 3.3 ohm 1/10W +/-5% 0805	1.00 RR83 :(1)
1	RES-IBB0010R-CJB	Chip Res Networks 10 ohmX4 1/10w +/-5% 0603	3.00 RN1-3 :(3)
1	RES-IBB0068R-CHB	Chip Res 68 Ohm 1/10W +/-5% 0603	2.00 R176 :(1) R50 :(1)
1	RES-IBB0075R-CHB	Chip Res 75 Ohm 1/10W +/-5% 0603	5.00 R11-2 :(2) R15-6 :(1) R6 :(2)



# ELECTRICAL PARTS LIST

## MAIN BOARD

	PART NO.	DESCRIPTION & SPECIFICATION	Q'TY	LOCATION
1	RES-IBB0091R-CHB	Chip Res 91 Ohm 1/10W +/-5% 0603	1.00	R170 :(1)
1	RES-IBC0150R-CHB	Chip Res 150 Ohm 1/10W +/-5% 0603	1.00	RR39 :(1)
1	RES-IBC0330R-CHB	Chip Res 330 Ohm 1/10W +/-5% 0603	2.00	R166 :(1) R302 :(1)
1	RES-IBC0390R-CHB	Chip Res 390 Ohm 1/10W +/-5% 0603 (RES-IBC0390R	1.00	R13 :(1)
1	RES-IBC0750R-CHB	Chip Res 750 Ohm 1/10W +/-5% 0603	1.00	RR86 :(1)
1	RES-IBD001K2-AHB	Chip Res 1.2K Ohm 1/10W +/-1% 0603	1.00	RR16 :(1)
1	RES-IBD002K2-CHB	Chip Res 2.2K Ohm 1/10W +/-5% 0603	1.00	R45 :(1)
1	RES-IBD003K9-CHB	Ceramic Chip Res 3.9Kohm 1/10W +/-5% 0603	2.00	R197 :(1) R208 :(1)
1	RES-IBD005K1-CHB	Chip Res 5.1K Ohm 1/10W +/-5% 0603	2.00	RR18 :(1) RR24 :(1)
1	RES-IBD006K8-CHB	Chip Res 6.8K Ohm 1/10W +/-5% 0603	5.00	R151 :(1) RR21-2 :(2) RR25-6 :(2)
1	RES-IBE0012K-AHB	chip Res 12K 1/10W ±1% 0603	1.00	RR34 :(1)
1	RES-IBE0015K-CHB	Chip Res 15K Ohm 1/10W +/-5% 0603	1.00	RR52 :(1)
1	RES-IBE0018K-CHB	Chip Res 18K Ohm 1/10W +/-5% 0603	1.00	RR63 :(1)
1	RES-IBE0020K-CHB	Chip Res 20K Ohm 1/10W +/-5% 0603	3.00	R199 :(1) R210 :(1) RR9 :(1)
1	RES-IBE0047K-AHB	chip Res 47k 1/10W ±1% 0603	1.00	RR47 :(1)
1	RES-IBE0056K-CHB	Ceramic Chip Res 56Kohm 1/10W +/-5% 0603	1.00	RR51 :(1)
1	RES-IBE0068K-CHB	Chip Res 68K Ohm 1/10W +/-5% 0603	1.00	RR8 :(1)
1	TRN-A009014C-CNS	Transistor 9014C,C Center, NPN, SOT-23	9.00	Q14-7 :(4) Q300 :(1) Q5 :(1) QQ7-8 :(2)
1	TRN-A009015S-CPS	Transistor 9015S,C Center, PNP, SOT-23	3.00	Q8-9 :(2) QQ3 :(1)
1	TRN-A2SB1132-CPF	Transistor 2SB1132 C Center, PNP, SSM	2.00	QQ1-2 :(2)
1	TRN-F2SK3018-DZS	Field Effect Transistor 2SK3018, D Center, SOT23	2.00	QQ5-6 :(2)
1	WAF-AAZSE200-BSD	UL Wafer 5 Pins P=2mm Vertical (339-0520-00)	1.00	JJ7 :(1)
1	WAF-AAZSE250-BSD	UL Wafer 5 Pins P=2.5mm Vertical (339-0525-00)	1.00	J4 :(1)
1	WAF-AAZSF200-BSD	UL Wafer 6 Pins P=2mm Vertical (339-0620-00)	2.00	J2 :(1) JJ6 :(1)
1	WAF-AAZSI250-BSD	UL Wafer 9 Pins P=2.5mm Vertical (339-0925-00)	1.00	J14 :(1)
1	WAF-SDLSV050-BSD	Film Connector Wafer , 24 Pins, P=0.5mm, SMT Type	1.00	CN1 :(1)
1	XTL-M27D000M-AAB	Crystal 27MHz HC-49S 20pF +/-30ppM	1.00	Y1 :(1)

# ELECTRICAL PARTS LIST

## VFD BOARD

	PART NO.	DESCRIPTION & SPECIFICATION	Q'TY	LOCATION
1	607-08080141-B	Foam Rubber W/Adhesive Tape 8mmWx8mmLx14mmH	1.00	
1	607-10020081-B	Foam Rubber 8mmHx10mmWx20mmL (440-2010-80)	1.00	
1	CAP-ESH0047U-DEB	Elect Cap 47uF 25V +80/-20%	1.00	EC2 :(1)
1	CAP-ESJ0100U-CEB	Elect Cap 100uF 16V +80/-20%	1.00	EC1 :(1)
1	DIO-MIRM0101-ZA0	Infrared Receiver Module PL-IRM0101-3 3 Pins	1.00	
1	DIO-S01N4148-ZA0	Switching Diode 1N4148 Bulk Pack	2.00	D1-2 :(2)
1	HSG-AFCA0400-IFC	UL 2877/2468 Housing 6 Pins #26 P=2.0mm L=400mm	1.00	
1	ICS-KPT16312-CYQ	VFD Driver IC PT16312 44Pins LQFP	1.00	U1 :(1)
1	PCB-D0000430-AFA	VFD PCB (94HB) Single Side 85x31.1x1.6mm Thk	1.00	
1	RES-ACE0010K-CA0	Carbon Film Res 10K Ohm 1/8W +/-5%	3.00	R10-1 :(2) R9 :(1)
1	RES-ACE0033K-CA0	Carbon Film Res 33K Ohm 1/8W +/-5%	8.00	R1-8 :(8)
1	RES-ACE0047K-CA0	Carbon Film Res 47K Ohm 1/8W +/-5%	1.00	R12 :(1)
1	VFD-A000509A	VFD FHD75X20-0509 32Pins	1.00	VFD :(1)
1	WIR-B01L0008-AZZ	Bare Wire DIA=0.5mm L=8mm	2.00	J1 :(1) J4 :(1)
1	WIR-B01L0017-AZZ	Bare Wire DIA=0.5mm L=17mm	1.00	J2 :(1)
1	WIR-B01L0019-AZZ	Bare Wire DIA=0.5mm L=19mm	1.00	J3 :(1)
1	WIR-B01L06D5-AZZ	Bare Wire DIA=0.5mm L=6.5mm	1.00	J5 :(1)
1	WIR-F05W0150-GFA	Flat Cable UL2877/2468 #26 L=150mm 5 Pins	1.00	

# ELECTRICAL PARTS LIST

## SCART BOARD

	PART NO.	DESCRIPTION & SPECIFICATION	Q'TY	LOCATION
1	HSG-AIGA0165-IFC	UL 2468 Housing 9 Pins #26 P=2.54mm L=165mm	1.00	
1	JCK-SAA0021P-ZAA	Scart Jack 21 Pins	1.00	J1 :(1)
1	PCB-X0000430-AFA	Scart PCB (94HB) Single Side 45.7x18.9x1.6mm	1.00	
1	RES-ACB0012R-CA0	Carbon Film Res 12 Ohm 1/8W +/-5%	1.00	R2 :(1)
1	RES-ACB0018R-CA0	Carbon Film Res 18 Ohm 1/8W +/-5%	1.00	R1 :(1)

# ELECTRICAL PARTS LIST

## KEY BOARD

	PART NO.	DESCRIPTION & SPECIFICATION	Q'TY	LOCATION
1	PCB-K0000430-AFA	KEY PCB (94HB) Single Side 68.2x18.2x1.6mm	1.00	
1	SWS-T1P2T1D5-OBL	Tact Switch 1P2T L=1.5mm Always Open NATS Type (733-2112-17)	4.00	SW1-4 :(4)
1	WIR-F05W0320-GFA	Flat Cable UL2877/2468 #26 L=320mm 5 Pins	1.00	

# ELECTRICAL PARTS LIST

## PWR BOARD

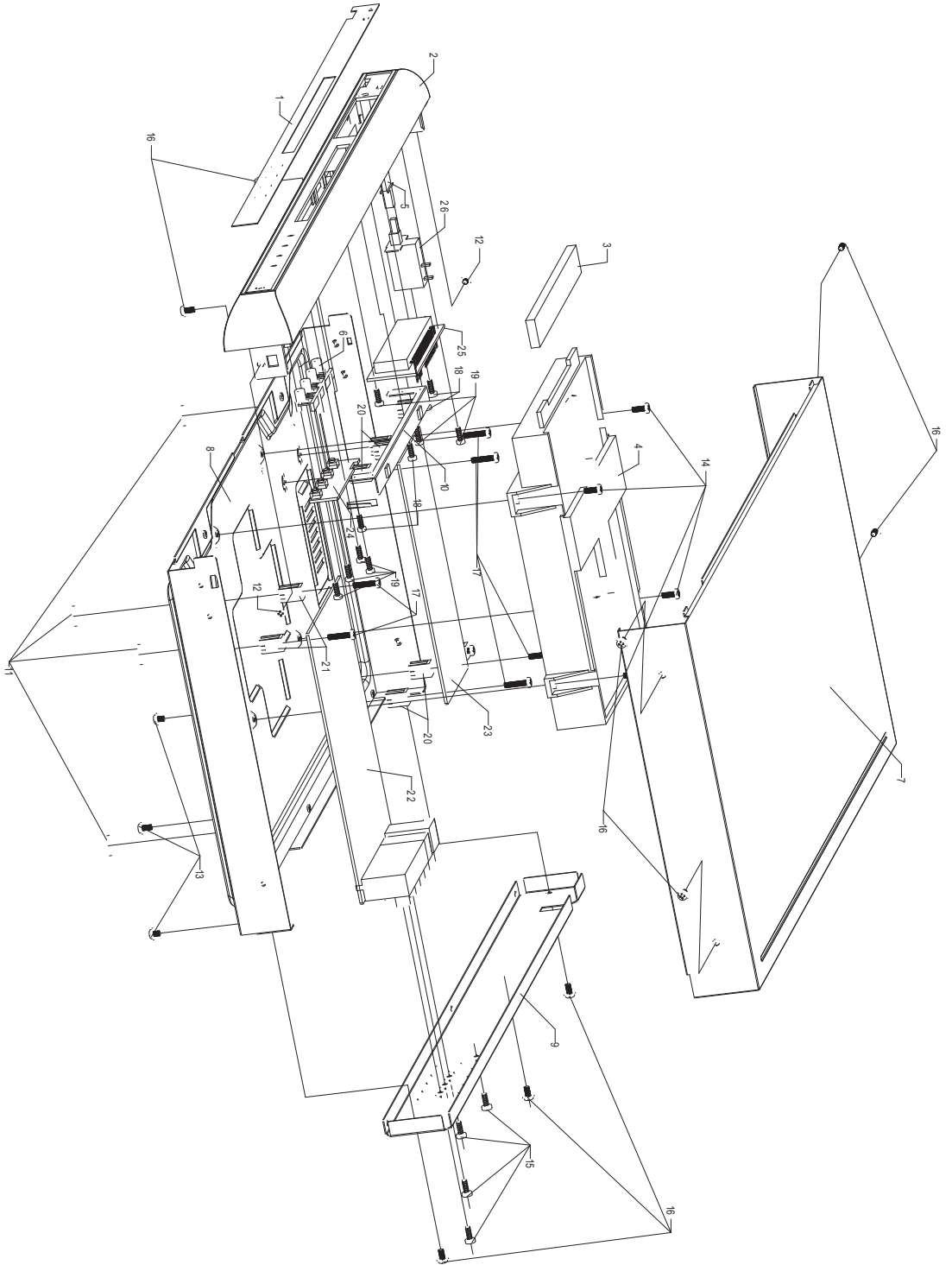
	PART NO.	DESCRIPTION & SPECIFICATION	Q'TY	LOCATION
1	508-40110031-0	Metal Sheet For Power PCB	2.00	
1	522-05020000-0	Fuse Clip (For 5x20mm PCB Type) (199-0045-00)	2.00	
1	CAP-CSC0100P-PDB	Ceramic Cap Y5P 100pF/1KV +/-10%	1.00	C307 :(1)
1	CAP-CSD1000P-FEB	Ceramic Cap 0.001uF 50V +80/-20%	1.00	C305 :(1)
1	CAP-CSD4700P-PDB	Ceramic Cap Y5P 4700pF/1KV +/-10%	1.00	C304 :(1)
1	CAP-CSE0D01U-OEB	Ceramic Cap 0.01uF/500V +80/-20%	1.00	C352 :(1)
1	CAP-CSF00D1U-FEB	Ceramic Cap 0.1uF 50V +80/-20%	2.00	C341 :(1) C388 :(1)
1	CAP-ESH0047U-CEB	Elect Cap 47uF 16V +80/-20%	1.00	C306 :(1)
1	CAP-ESH0047U-MFB	Elect Cap 47uF/400V +/-20%	1.00	C303 :(1)
1	CAP-ESJ0100U-CEB	Elect Cap 100uF 16V +80/-20%	3.00	C365 :(1) C368 :(1) C375 :(1)
1	CAP-ESJ0100U-EFB	Elect Cap 100uF/35V +/-20%	2.00	C367 :(1) C377 :(1)
1	CAP-ESJ0330U-CFB	Elect Cap 330uF/16V +/-20%	1.00	C372 :(1)
1	CAP-ESK2200U-BFB	Elect Cap 2200uF/10V +/-20%	1.00	C362 :(1)
1	CAP-VSC0220P-RDB	Safety Standard Recognized Ceramic Cap 220pF Y5p 250VAC +/-10%	2.00	Z311-2 :(2)
1	CAP-VSD1000P-RFB	Safety Standard Recognized Ceramic Cap 0.001uF 250VAC +/-10%	1.00	Z313 :(1)
1	CAP-WSF00D1U-QDB	Main Interference Suppression Cap 0.1uF/275V +/-10%	2.00	C301-2 :(2)
1	CLS-CZ210T210	Inducter NC-F0124 4Pin 210T 17x17x20mm	1.00	L301 :(1)
1	CLS-FZ0010UH	Inducter NC-F0123 10uH LXW=12x8mm	1.00	L352 :(1)
1	CLS-LZ0010UH	Axial Inductor 030 Type 10uH	3.00	L355 :(1) L357-8 :(2)
1	DIO-R01N4004-ZA0	Rectifier Diode 1N4004 Bulk Pack	3.00	D355 :(1) D357-8 :(2)
1	DIO-R01N4007-ZA0	Rectifier Diode 1N4007 Bulk Pack	6.00	D301-5 :(5) D307 :(1)
1	DIO-R01N5822-ZA0	Rectifier Diode 1N5822 Bulk Pack	1.00	D352 :(1)
1	DIO-S01N4148-ZA0	Switching Diode 1N4148 Bulk Pack	2.00	D306 :(1) D308 :(1)
1	DIO-Z00005V1-AA0	Zener Diode 1/2W 5.1V Bulk Pack	1.00	VD351 :(1)
1	FUS-G2A0V250-EDB	Glass Tube Fuse 2A/250V w/Cap w/o Lead	1.00	F1 :(1)

# ELECTRICAL PARTS LIST

## PWR BOARD

	PART NO.	DESCRIPTION & SPECIFICATION	Q'TY	LOCATION
1	ICS-I00TL431-BDU	Regulator Precision IC TL431 (TO-92A) Plastic Package	1.00	U341 :(1)
1	ICS-Q1200P60-BIC	Controller IC 1200P60 (MOSFET Power Manage) Dip8	1.00	U301 :(1)
1	ICS-T00PC817-BIA	D/M Converter IC PC817 Photo Coupler Dip4	1.00	U302 :(1)
1	PCB-P0000430-BFB	Power PCB(94V0)Single Side 58x15`x1.6mmThk Ver 0.2	1.00	
1	RES-AEA002R4-CA0	Carbon Film Res 2.4 Ohm 1/4W +/-5%	2.00	R302-3 :(2)
1	RES-AEA006R8-CA0	Carbon Film Res 6.8 Ohm 1/4W +/-5%	1.00	R352 :(1)
1	RES-AEC0100R-CA0	Carbon Film Res 100 Ohm 1/4W +/-5%	1.00	R341 :(1)
1	RES-AEC0300R-CA0	Carbon Film Res 300 Ohm 1/4W +/-5%	1.00	R308 :(1)
1	RES-AEC0470R-CA0	Carbon Film Res 470 Ohm 1/4W +/-5%	2.00	R358-9 :(2)
1	RES-AED001K5-CA0	Carbon Film Res 1.5K Ohm 1/4W +/-5%	1.00	R305 :(1)
1	RES-AED004K7-CA0	Carbon Film Res 4.7K Ohm 1/4W +/-5%	1.00	R346 :(1)
1	RES-AEE0010K-CA0	Carbon Film Res 10K Ohm 1/4W +/-5%	2.00	R342 :(1) R344 :(1)
1	RES-AEE0022K-CA0	Carbon Film Res 22K Ohm 1/4W +/-5%	1.00	R310 :(1)
1	RES-AEE0030K-CA0	Carbon Film Res 30K Ohm 1/4W +/-5%	1.00	R304 :(1)
1	RES-BGF0150K-CA0	Metal Oxide Carbon Film Res 150K Ohm 1W +/-5%	1.00	R309 :(1)
1	RES-BHE0047K-CA0	Metal Oxide Carbon Film Res 47K Ohm 2W +/-5%	1.00	R301 :(1)
1	TRN-F002N60B-DZE	Field Effect Transistor SSS2N60B TO-220F	1.00	V301 :(1)
1	WAF-AAZSZ396-BSD	UL Wafer 3Pins P=3.96mm Vertical L=13mm(Second Pin Is Empty)	2.00	J1 :(1) SW1 :(1)
1	WIR-B01L0010-AZZ	Bare Wire DIA=0.5mm L=10mm (180-0010-05)	7.00	D362 :(1) J3 :(1) J6 :(1) J7 :(1) J8 :(1) R306 :(1) R343 :(1)
1	XMR-HOTDVD01-PFU	Power Transformer NC-H0323 Dip12	1.00	T301 :(1)

# EXPLODED VIEW DIAGRAM



SCALE 0:800

INDEX	DESCRIPTION	PART NO.	QTY
1	Front PC Sheet	617-4300004-0	1
2	D/V/D Door	401-430A0900NN-0	1
3	D/V/D Bracket	401-430A0600NN-0	1
4	Power Button	401-430A1000EN-0	1
5	Control Button	401-430A1000EN-0	1
6	Metal Top Cabinet	509-43140601-0	1
7	Metal Bottom Cabinet	505-31040801-1	1
8	Metal Back Cabinet	505-31040604-0	1
9	Rubber Foot	611-430B010-0	4
10	Metal Bracket	505-4310605-0	1
11	Metal Back Cabinet	505-31040604-0	1
12	Metal Bottom Cabinet	505-31040801-1	1
13	Metal Top Cabinet	509-43140601-0	1
14	Control Button	401-430A1000EN-0	1
15	Power Button	401-430A1000EN-0	1
16	D/V/D Bracket	401-430A0600NN-0	1
17	D/V/D Door	401-430A0900NN-0	1
18	Front PC Sheet	617-4300004-0	1
19	Rubber Foot	611-430B010-0	4
20	Metal Bracket	505-4310605-0	1
21	Metal Back Cabinet	505-31040604-0	1
22	Metal Bottom Cabinet	505-31040801-1	1
23	Metal Top Cabinet	509-43140601-0	1
24	Control Button	401-430A1000EN-0	1
25	Power Button	401-430A1000EN-0	1
26	D/V/D Bracket	401-430A0600NN-0	1
27	D/V/D Door	401-430A0900NN-0	1
28	Front PC Sheet	617-4300004-0	1

Rev.	Revision Note	Date	Checked
16			